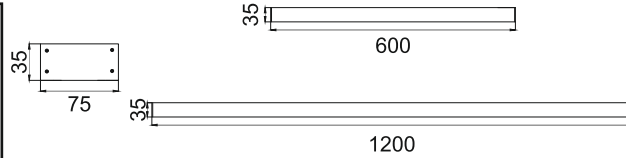
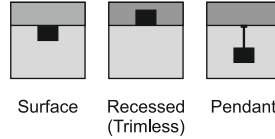


Acumis Alpha L
LPL646



- Housing Finish
- HA Al. Anodised
 - HW White
 - HB Black
 - HC Custom
- Length
- L60 600MM
 - L12 1200MM
 - LC Custom
- IP Rating
- 20 IP20



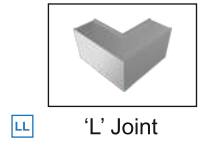
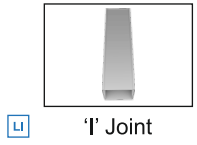
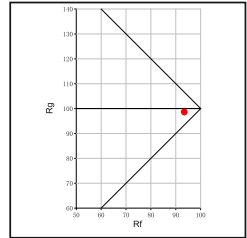
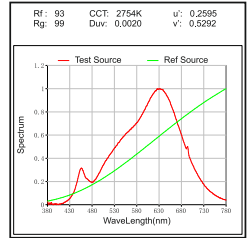
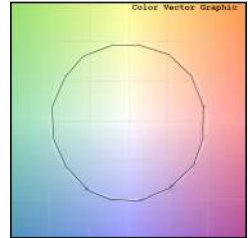
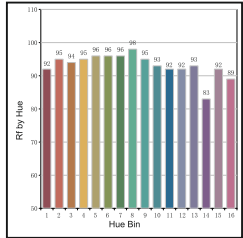
Unit : MM

Linear LED Light

Illumination Options

- | | | | | | | | |
|--|--|----------|-----------|--|-------------|--|--------------|
| 27 DfR | | 24W @600 | 48W @1200 | | 2160lm @600 | | 4320lm @1200 |
| 30 DfR | | 24W @600 | 48W @1200 | | 2280lm @600 | | 4560lm @1200 |
| 40 DfR | | 24W @600 | 48W @1200 | | 2520lm @600 | | 5040lm @1200 |
| 65 DfR | | 24W @600 | 48W @1200 | | 2880lm @600 | | 5760lm @1200 |

- CCT
- K 2700K
 - K 3000K
 - K 4000K
 - K 6500k
- Diffused
- -
 -



* All degree & wattage options with photometric data available on request *
* IP variants & list of accessories for this model available on request *

Technical Details

Housing material	Aluminum Extruded	Light Source	LED
Diffuser material	PMMA	CRI (Ra)	>90
Mounting	Surface/Recessed/Pendant mounted	MacAdam Ellipse	<3
Weight	720/1440gms	Luminous Efficacy	~75lm/W@3000k
Junction Temperature	Tj<75°C	Life Time	L80-B10 50,000hrs.

Accessories Other Products in this Series

- Power Options**
- N Non Dimmable
 - P Phase Cut Dimming
 - A 0-10/ 1-10V Analog
 - D DALI Dimming
- MR Recessed Clips MS Surface Clips
- MP Pendant
- Remote Driver Housing
Linear LED Fixture

Acumis Alpha S LPL644 W35xH55 12W-24W	Acumis Alpha M LPL645 W50xH35 18W-36W	Acumis Beta S LPL662 W50xH35 12W-24W	Acumis Beta M LPL663 W50xH35 18W-36W	Acumis Beta L LPL664 W95xH55 24W-48W	Acumis Gamma S LPL680 W35xH75 12W-24W	Acumis Gamma M LPL681 W50xH75 18W-36W	Acumis Gamma L LPL682 W75xH75 24W-48W

Ordering code : LPLxxx(model no)-Hx(housing)-Lxx(length)-xx(IP)-xxxx(watt per meter+cct)-Lx(linkage)-x(dimming)-Mx(mounting)
Example : {646} {HA} {L60} {20} {4827} {LT} {A} {MS}