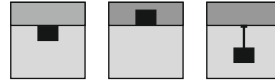
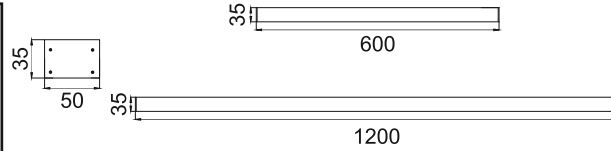


Acumis Alpha M
LPL645



Surface Recessed (Trimless) Pendant

- Housing Finish HA Al. Anodised
HW White
HB Black
HC Custom
- Length L60 600MM
L12 1200MM
LC Custom
- IP Rating 20 IP20

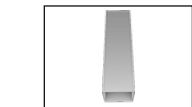
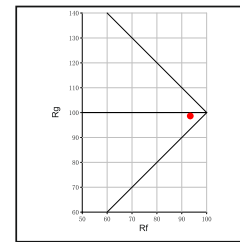
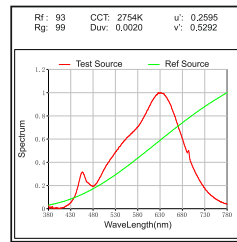
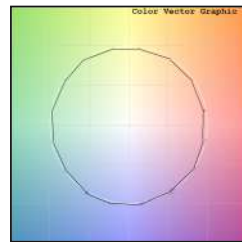
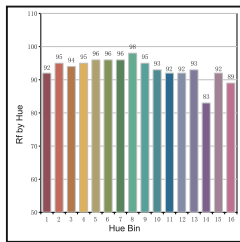
Unit : MM

Linear LED Light

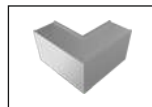
Illumination Options

- | | | | | | | | |
|--|--|----------|-----------|--|-------------|--|--------------|
| 27 DfP | | 18W @600 | 36W @1200 | | 1620lm @600 | | 3240lm @1200 |
| 30 DfP | | 18W @600 | 36W @1200 | | 1710lm @600 | | 3420lm @1200 |
| 40 DfP | | 18W @600 | 36W @1200 | | 1890lm @600 | | 3780lm @1200 |
| 65 DfP | | 18W @600 | 36W @1200 | | 2160lm @600 | | 4320lm @1200 |

- CCT K 2700K Diffused
K 3000K Diffused
- CCT K 4000K Diffused
K 6500k Diffused



LI 'I' Joint



LI 'L' Joint

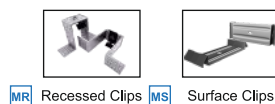
* All degree & wattage options with photometric data available on request *
 * IP variants & list of accessories for this model available on request *

Technical Details

Housing material	Aluminum Extruded	Light Source	LED
Diffuser material	PMMA	CRI (Ra)	>90
Mounting	Surface/Recessed/Pendant mounted	MacAdam Ellipse	<3
Weight	650/1300gms	Luminous Efficacy	~75lm/W@3000k
Junction Temperature	Tj<75°C	Life Time	L80-B10 50,000hrs.

Accessories

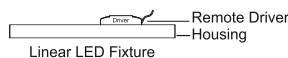
- Power Options
- N Non Dimmable
 - P Phase Cut Dimming
 - A 0-10/ 1-10V Analog
 - D DALI Dimming



MP Pendant

Other Products in this Series

Acumis Alpha S LPL644 W35xH35 12W-24W	Acumis Alpha L LPL646 W75xH35 24W-48W	Acumis Beta S LPL662 W50xH35 12W-24W	Acumis Beta M LPL663 W50xH35 18W-36W	Acumis Beta L LPL664 W95xH35 24W-48W	Acumis Gamma S LPL680 W35xH75 12W-24W	Acumis Gamma M LPL681 W50xH75 18W-36W	Acumis Gamma L LPL682 W75xH75 24W-48W	



Ordering code : LPLxxx(model no)-Hx(housing)-Lxx(length)-xx(IP)-xxxx(watt per meter+cct)-Lx(linkage)-x(dimming)-Mx(mounting)
 Example : {645} {HA} {L60} {20} {3627} {LT} {A} {MS}