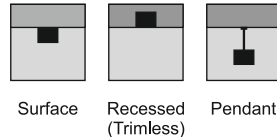
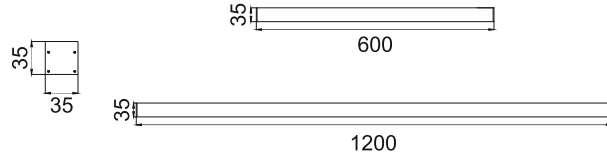




Acumis Alpha S
LPL644



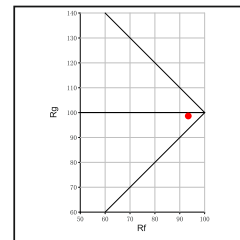
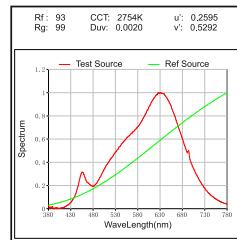
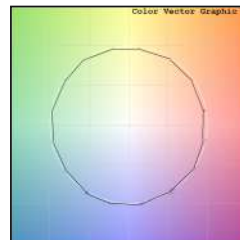
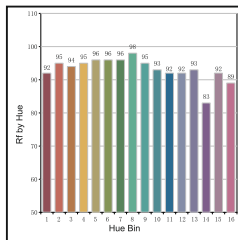
- Housing Finish: HA (Al. Anodised), HW (White), HB (Black), HC (Custom)
- Length: LB0 (600MM), L12 (1200MM), LC (Custom)
- IP Rating: IP20

Unit : MM

Linear LED Light

Illumination Options

- | | | | | | | | | | | | |
|--|--|----------|-----------|--|-------------|--|--------------|--|-------|--|----------|
| | | 12W @600 | 24W @1200 | | 1080lm @600 | | 2160lm @1200 | | 2700K | | Diffused |
| | | 12W @600 | 24W @1200 | | 1140lm @600 | | 2280lm @1200 | | 3000K | | Diffused |
| | | 12W @600 | 24W @1200 | | 1260lm @600 | | 2520lm @1200 | | 4000K | | Diffused |
| | | 12W @600 | 24W @1200 | | 1440lm @600 | | 2880lm @1200 | | 6500k | | Diffused |



I 'I' Joint



L 'L' Joint

* All degree & wattage options with photometric data available on request *
* IP variants & list of accessories for this model available on request *

Technical Details

Housing material	Aluminum Extruded	Light Source	LED
Diffuser material	PMMA	CRI (Ra)	>90
Mounting	Surface/Recessed/Pendant mounted	MacAdam Ellipse	<3
Weight	580/1160gms	Luminous Efficacy	~75lm/W@3000k
Junction Temperature	Tj<75°C	Life Time	L80-B10 50,000hrs.

Accessories

- Power Options: N (Non Dimmable), P (Phase Cut Dimming), A (0-10/ 1-10V Analog), D (DALI Dimming)
- MR Recessed Clips
- MS Surface Clips
- MP Pendant
- Remote Driver Housing
- Linear LED Fixture

Other Products in this Series

Acumis Alpha M LPL645 W35xH35 18W-36W	Acumis Alpha L LPL646 W75xH35 24W-48W	Acumis Beta S LPL662 W50xH35 12W-24W	Acumis Beta M LPL663 W50xH35 18W-36W	Acumis Beta L LPL664 W95xH35 24W-48W	Acumis Gamma S LPL680 W35xH75 12W-24W	Acumis Gamma M LPL681 W50xH75 18W-36W	Acumis Gamma L LPL682 W75xH75 24W-48W

Ordering code : LPLxxx(model no)-Hx(housing)-Lxx(length)-xx(IP)-xxxx(watt per meter+cct)-Lx(linkage)-x(dimming)-Mx(mounting)
Example : {644} {HA} {L60} {20} {2427} {LT} {A} {MS}