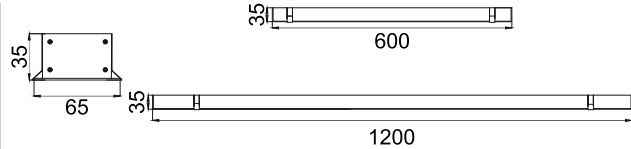




**Acumis Beta M
LPL663**



Recessed

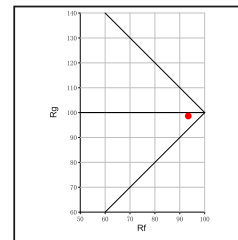
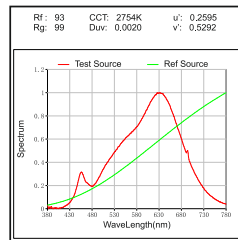
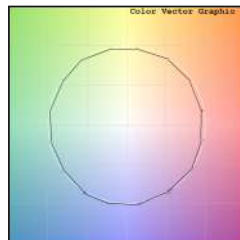
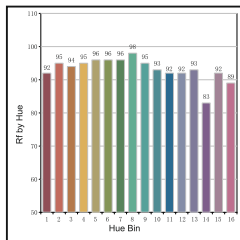
- Housing Finish
- HA Al. Anodised
 - HW White
 - HB Black
 - HC Custom
- Length
- L60 600MM
 - L12 1200MM
 - LC Custom
- IP Rating
- 20 IP20

Unit : MM

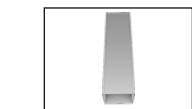
Linear LED Light

Illumination Options

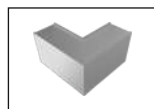
<input type="checkbox"/> 27 DfP		18W @600	36W @1200		1620lm @600		3240lm @1200	<input type="checkbox"/> CCT	2700K		Diffused
<input type="checkbox"/> 30 DfP		18W @600	36W @1200		1710lm @600		3420lm @1200	<input type="checkbox"/> K	3000K		Diffused
<input type="checkbox"/> 40 DfP		18W @600	36W @1200		1890lm @600		3780lm @1200	<input type="checkbox"/> CCT	4000K		Diffused
<input type="checkbox"/> 65 DfP		18W @600	36W @1200		2160lm @600		4320lm @1200	<input type="checkbox"/> K	6500k		Diffused



* All degree & wattage options with photometric data available on request *
* IP variants & list of accessories for this model available on request *



'I' Joint



'L' Joint

Technical Details

Housing material	Aluminum Extruded	Light Source	LED
Diffuser material	PMMA	CRI (Ra)	>90
Mounting	Recessed mounted	MacAdam Ellipse	<3
Weight	660/1310gms	Luminous Efficacy	~75lm/W@3000k
Junction Temperature	Tj<75°C	Life Time	L80-B10 50,000hrs.

Accessories

- Power Options**
- N Non Dimmable
 - P Phase Cut Dimming
 - A 0-10/ 1-10V Analog
 - D DALI Dimming

Other Products in this Series

Acumis Alpha S LPL644 W35xH55 12W-24W	Acumis Alpha M LPL645 W50xH55 18W-36W	Acumis Alpha L LPL646 W75xH55 24W-48W	Acumis Beta S LPL662 W50xH35 12W-24W	Acumis Beta L LPL664 W65xH55 24W-48W	Acumis Gamma S LPL680 W35xH75 12W-24W	Acumis Gamma M LPL681 W50xH75 18W-36W	Acumis Gamma L LPL682 W75xH75 24W-48W



Ordering code : LPLxxx(model no)-Hx(housing)-Lxx(length)-xx(IP)-xxxx(watt per meter+cct)-Lx(linkage)-x(dimming)
 Example : {663} {HA} {L60} {20} {3627} {LT} {A}