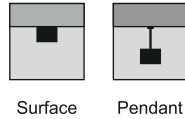
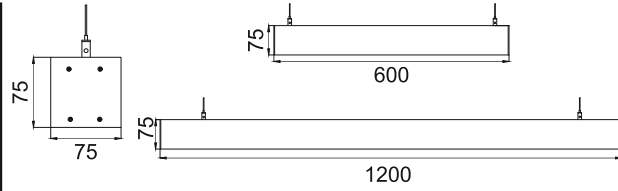


**Acumis Gamma L
LPL682**



- Housing Finish**
- HA Al. Anodised
 - HW White
 - HB Black
 - HC Custom
- Length**
- L60 600MM
 - L12 1200MM
 - LC Custom
- IP Rating**
- 20 IP20

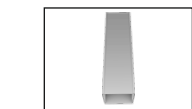
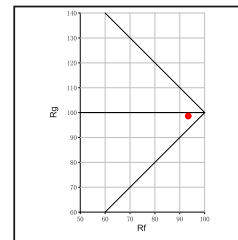
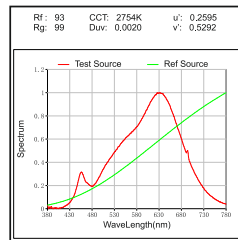
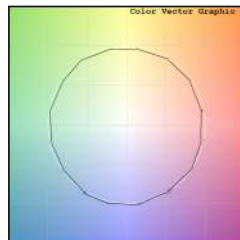
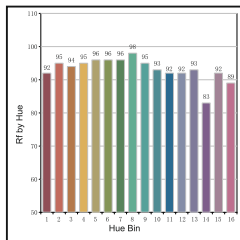
Unit : MM

Linear LED Light

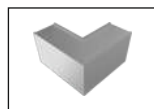
Illumination Options

- | | | | | | |
|--------|----------|-------------|-----------|-------------|--------------|
| 27 DMR | 24W @600 | 2160lm @600 | 48W @1200 | 2280lm @600 | 4320lm @1200 |
| 30 DMR | 24W @600 | 2160lm @600 | 48W @1200 | 2280lm @600 | 4560lm @1200 |
| 40 DMR | 24W @600 | 2520lm @600 | 48W @1200 | 2880lm @600 | 5040lm @1200 |
| 65 DMR | 24W @600 | 2520lm @600 | 48W @1200 | 2880lm @600 | 5760lm @1200 |

- CCT**
- 2700K
 - 3000K
 - 4000K
 - 6500k
- Beam Spread**
- Diffused
 - Diffused
 - Diffused
 - Diffused



I 'I' Joint



L 'L' Joint

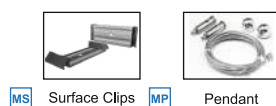
* All degree & wattage options with photometric data available on request *
* IP variants & list of accessories for this model available on request *

Technical Details

Housing material	Aluminum Extruded	Light Source	LED
Diffuser material	PMMA	CRI (Ra)	>90
Mounting	Surface/Pendant mounted	MacAdam Ellipse	<3
Weight	735/1455gms	Luminous Efficacy	~75lm/W@3000k
Junction Temperature	Tj<75°C	Life Time	L80-B10 50,000hrs.

Accessories

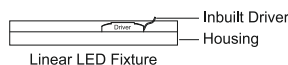
- Power Options**
- N** Non Dimmable
 - P** Phase Cut Dimming
 - A** 0-10/ 1-10V Analog
 - D** DALI Dimming



MS Surface Clips **MP** Pendant

Other Products in this Series

W35xH55 12W-24W	W50xH55 18W-36W	W75xH55 24W-48W	W50xH55 12W-24W	W65xH55 18W-36W	W95xH55 24W-48W	W35xH75 12W-24W	W50xH75 18W-36W



Ordering code : LPLxxx(model no)-Hx(housing)-Lxx(length)-xx(IP)-xxxx(watt per meter+cct)-Lx(linkage)-x(dimming)-Mx(mounting)
 Example : {682} {HA} {L60} {20} {4827} {LT} {A} {MS}