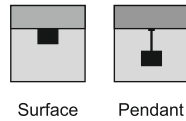
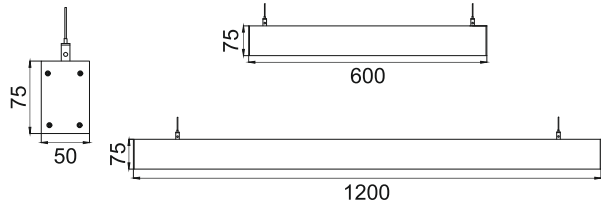


**Acumis Gamma M
LPL681**



- Housing Finish**
- HA Al. Anodised
 - HW White
 - HB Black
 - HC Custom
- Length**
- L60 600MM
 - L12 1200MM
 - LC Custom
- IP Rating**
- 20 IP20

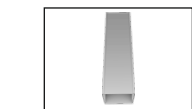
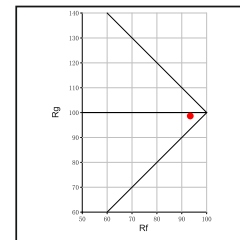
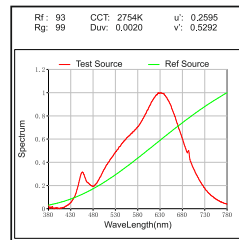
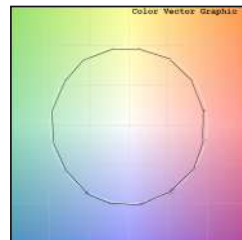
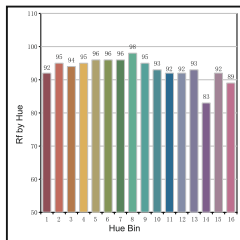
Unit : MM

Linear LED Light

Illumination Options

- | | | | | | | | |
|--|--|----------|-----------|--|-------------|--|--------------|
| | | 18W @600 | 36W @1200 | | 1620lm @600 | | 3240lm @1200 |
| | | 18W @600 | 36W @1200 | | 1710lm @600 | | 3420lm @1200 |
| | | 18W @600 | 36W @1200 | | 1890lm @600 | | 3780lm @1200 |
| | | 18W @600 | 36W @1200 | | 2160lm @600 | | 4320lm @1200 |

- CCT**
- 2700K
 - 3000K
 - 4000K
 - 6500k
- Beam Spread**
- Diffused
 - Diffused



I 'I' Joint



L 'L' Joint

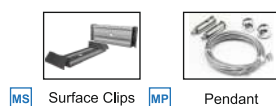
* All degree & wattage options with photometric data available on request *
* IP variants & list of accessories for this model available on request *

Technical Details

Housing material	Aluminum Extruded	Light Source	LED
Diffuser material	PMMA	CRI (Ra)	>90
Mounting	Surface/Pendant mounted	MacAdam Ellipse	<3
Weight	665/1315gms	Luminous Efficacy	~75lm/W@3000k
Junction Temperature	Tj<75°C	Life Time	L80-B10 50,000hrs.

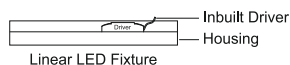
Accessories

- Power Options**
- N** Non Dimmable
 - P** Phase Cut Dimming
 - A** 0-10/ 1-10V Analog
 - D** DALI Dimming



Other Products in this Series

Acumis Alpha S LPL644 W35xH55 12W-24W	Acumis Alpha M LPL645 W50xH55 18W-36W	Acumis Alpha L LPL646 W75xH55 24W-48W	Acumis Beta S LPL662 W50xH55 12W-24W	Acumis Beta M LPL663 W65xH55 18W-36W	Acumis Beta L LPL664 W95xH55 24W-48W	Acumis Gamma S LPL680 W35xH75 12W-24W	Acumis Gamma L LPL682 W75xH75 24W-48W



Ordering code : LPLxxx(model no)-Hx(housing)-Lxx(length)-xx(IP)-xxxx(watt per meter+cct)-Lx(linkage)-x(dimming)-Mx(mounting)
 Example : {681} {HA} {L60} {20} {3627} {LT} {A} {MS}