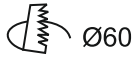
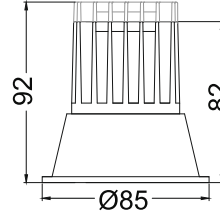
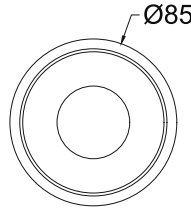
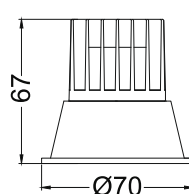
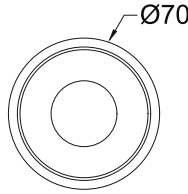
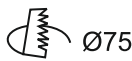




**Allura Fix Mini**  
IRD816A



**Allura Fix Max**  
IRD816B/C



**Finish Options**

- Trim**
- TW White
  - TB Black
  - TC Custom
- Reflector**
- RW White
  - RM Matt
  - RS Specular
  - RG Satin Gold
  - RP Pearl Black
  - RC Copper

- IP Rating**
- 20 IP20
  - 44 IP44

Unit : MM

**Allura Fix**  
IRD816

**Recessed Fixed Downlight**

**Illumination Options**



7W & 10W/15W



616lm & 880lm/1320lm



2700K



15° 24°  
38°



7W & 10W/15W



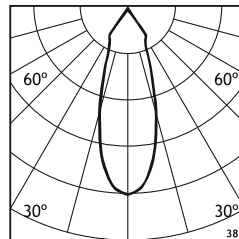
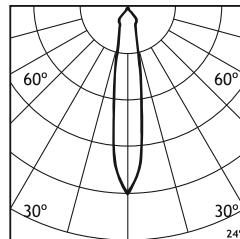
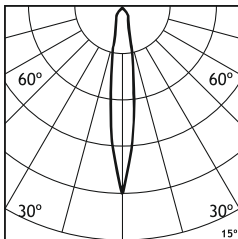
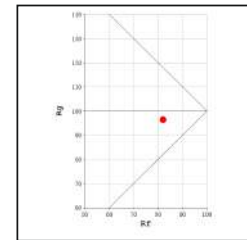
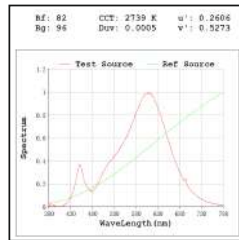
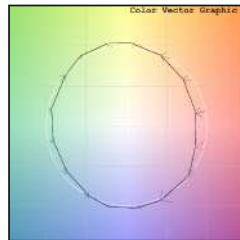
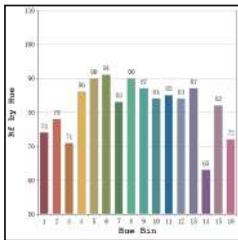
630lm & 900lm/1350lm



3000K



15° 24°  
38°



\* All degree & wattage options with photometric data available on request \*  
\* IP variants & list of accessories for this model available on request \*

**Technical Details**

Housing	Aluminum die casting	LOR	~80%
Mounting	Spring - Ceiling mounted	UGR	<19
Light Source	Single source LED	CRI (Ra)	>80
Weight	190/310/350gms	MacAdam Ellipse	<3
Junction Temperature	Tj<75°C	Luminous Efficacy	~75lm/W
Heat Sink	Al6063	Life Time	L80-B10 50,000hrs.

**Accessories**

**Power Options**

- N Non Dimmable
- P Phase Cut Dimming
- A 0-10/ 1-10V Analog
- D DALI Dimming

- H Honeycomb
- S Softening Lens
- D Diffused Lens
- C Clear Lens



**Allura Tilt**  
IRD817  
Ø70 - 7W  
Ø85 - 10W/15W

**Other Products in this Series**

Ordering code : IRDxxx(model no)-Tx(trim)-Rx(reflector)-xx(IP)-xxxx(watt+cct+beam angle)-x(dimming)-x(filter)  
Example : {816} {TW} {RS} {20} {727S} {A} {S}