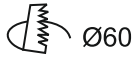
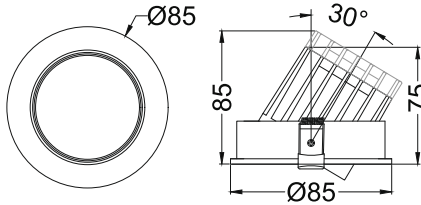
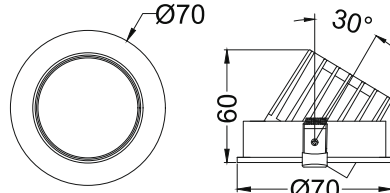
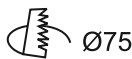


Allura Tilt Mini
IRD817A



Allura Tilt Max
IRD817B/C



Finish Options

- Trim**
- TW White
 - TB Black
 - TC Custom
- Reflector**
- RW White
 - RM Matt
 - RS Specular
 - RG Satin Gold
 - RP Pearl Black
 - RC Copper

- IP Rating**
- 20 IP20
 - 44 IP44

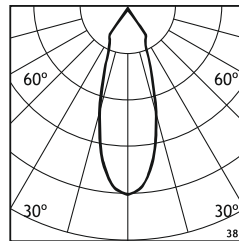
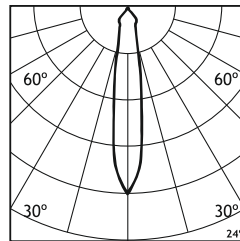
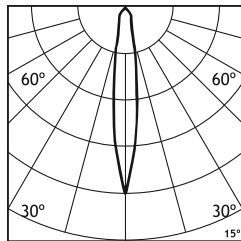
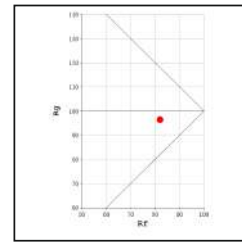
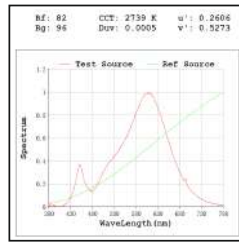
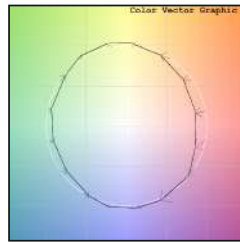
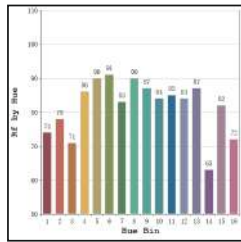
Unit : MM

Allura Tilt
IRD817

Recessed Adjustable Downlight

Illumination Options

- | | | | | |
|--|--------------|----------------------|-------|----------------|
| <input type="checkbox"/> 27N 27S
<input type="checkbox"/> 27M | 7W & 10W/15W | 616lm & 880lm/1320lm | 2700K | 15° 24°
38° |
| <input type="checkbox"/> 30N 30S
<input type="checkbox"/> 30M | 7W & 10W/15W | 630lm & 900lm/1350lm | 3000K | 15° 24°
38° |



* All degree & wattage options with photometric data available on request *
 * IP variants & list of accessories for this model available on request *

Technical Details

Housing	Aluminum die casting	LOR	~80%
Mounting	Spring - Ceiling mounted	UGR	<19
Light Source	Single source LED	CRI (Ra)	>80
Weight	190/310/350gms	MacAdam Ellipse	<3
Junction Temperature	Tj<75°C	Luminous Efficacy	~75lm/W
Heat Sink	Al6063	Life Time	L80-B10 50,000hrs.

Accessories

Power Options

- N Non Dimmable
- P Phase Cut Dimming
- A 0-10/ 1-10V Analog
- D DALI Dimming

- H Honeycomb
- S Softening Lens
- D Diffused Lens
- C Clear Lens



Allura Fix
IRD816
Ø70 - 7W
Ø85 - 10W/15W

Other Products in this Series

Ordering code : IRDxxx(model no)-Tx(trim)-Rx(reflector)-xx(IP)-xxxx(watt+cct+beam angle)-x(dimming)-x(filter)
 Example : {817} {TW} {RS} {20} {727S} {A} {S}