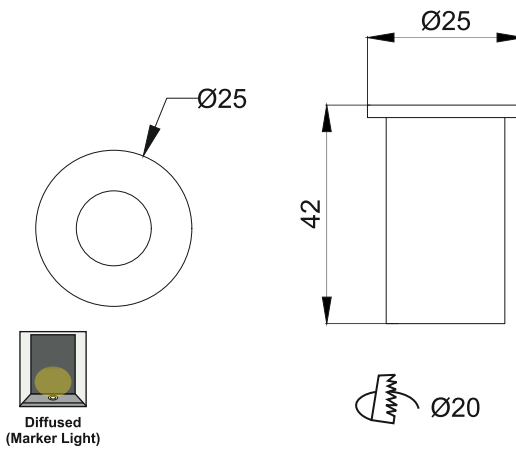




Hypogean Micro
ERI599



- Finish FS SS
FC Custom
- Cable Length C0.5 0.5 Meter
C1 1 Meter
CC Custom
- Voltage 24V DC24V
- IP Rating 67 IP67

Unit : MM

Recessed Inground Light

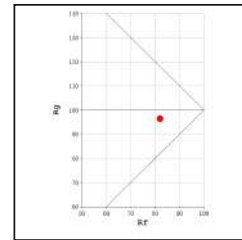
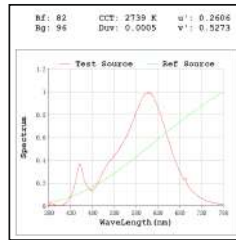
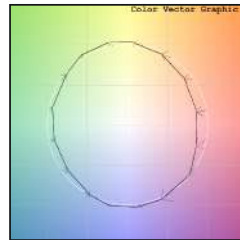
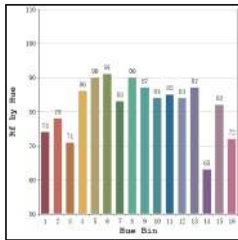
Illumination Options

- 27 Diff 30 Diff **1W**
- 40 Diff RGB Diff **1W**

- 70lm**
- 75lm**
- 83lm**
- 40lm**

- cct **2700K**
- k **3000K**
- cct **4000K**
- k **RGB**

- Diffused**
- Diffused**



* All degree & wattage options with photometric data available on request *
* IP variants & list of accessories for this model available on request *

Technical Details

Housing	SS 316 / Aluminum die casting	LOR	~85%
Mounting	Recessed floor mounted	Operating voltage	24V
Light Source	High Power LED	CRI (Ra)	>80
Weight	215gms	MacAdam Ellipse	<3
Junction Temperature	Tj<75°C	Luminous Efficacy	~100lm/W
Heat Sink	Al6063	Life Time	L80-B10 50,000hrs.

Accessories

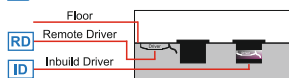
- N Non Dimmable
- P Phase Cut Dimming
- A 0-10/ 1-10V Analog
- D DALI Dimming

Ingress protection 67 Connectors

- IC 'I' Connector
- TC 'T' Connector
- XC 'X' Connector

Other Products in this Series

0.30 / 12.50 1W-3W	0.50 / 12.50 1W-3W	0.105 3W-9W	0.55 - 3W	0.150 6W/12W	0.150 9W/18W	0.155 12W/24W



Remote & Inbuilt Driver Options

Ordering code : ERIxxx(model no)-Fx(finish)-xx(cable length)-xxx(voltage)-xx(IP)-xxxx(watt+cct+beam angle)-x(dimming)-xc(ip connectors)

Example : {599} {FS} {C1} {24V} {67} {1275} {A} {TC}