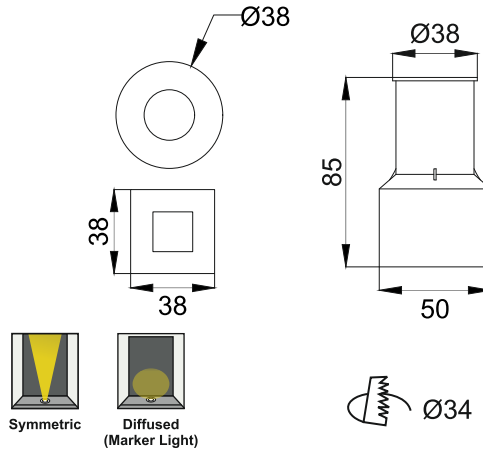


**Hypogean Mini
ERI600**



Finish	<input type="checkbox"/> FS SS	<input type="checkbox"/> FC Custom	
Trim	<input type="checkbox"/> TR Round	<input type="checkbox"/> TS Square	
Cable Length	<input type="checkbox"/> C0.5 0.5 Meter	<input type="checkbox"/> C1 1 Meter	<input type="checkbox"/> CC Custom
Voltage	<input type="checkbox"/> 24V DC24V		
IP Rating	<input type="checkbox"/> 67 IP67		

Unit : MM

Recessed Inground Light

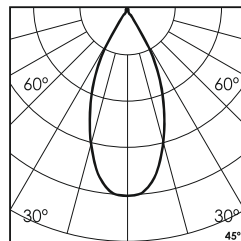
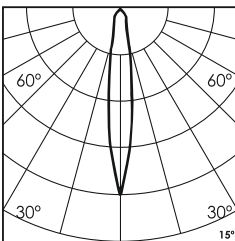
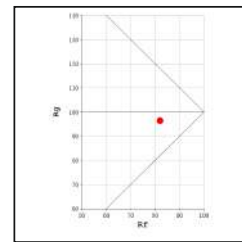
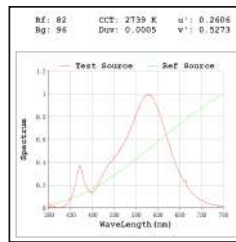
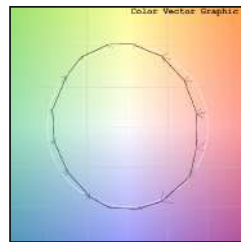
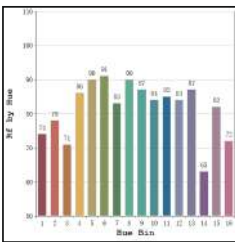
Illumination Options

<input type="checkbox"/> 27W 27W 27W <input type="checkbox"/> 30N 30M 30M Diff		1W/2W/3W
<input type="checkbox"/> 40N 40M 40M <input type="checkbox"/> RGB RGB RGB N M Diff		1W/2W/3W

	70lm/140lm/210lm
	75lm/150lm/225lm
	82lm/161lm/241lm
	40lm/80lm/120lm

	2700K
	3000K
	4000K
	RGB

	15° 45° Diffused
	15° 45° Diffused
	15° 45° Diffused
	15° 45° Diffused



* All degree & wattage options with photometric data available on request *
* IP variants & list of accessories for this model available on request *

Technical Details

Housing	SS 316 / Aluminum die casting	LOR	~85%
Mounting	Recessed floor mounted	Operating voltage	24V
Light Source	High Power LED	CRI (Ra)	>80
Weight	500gms	MacAdam Ellipse	<3
Junction Temperature	Tj<75°C	Luminous Efficacy	~100lm/W
Heat Sink	Al6063	Life Time	L80-B10 50,000hrs.

Accessories

Power Options

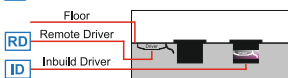
<input type="checkbox"/> N	Non Dimmable
<input type="checkbox"/> P	Phase Cut Dimming
<input type="checkbox"/> A	0-10/ 1-10V Analog
<input type="checkbox"/> D	DALI Dimming

Ingress protection 67 Connectors

	<input type="checkbox"/> I 'I' Connector		<input type="checkbox"/> T 'T' Connector		<input type="checkbox"/> X 'X' Connector
--	--	--	--	--	--

Other Products in this Series

026 - 1W	050 / 1250 1W-3W	0105 3W-9W	055 - 3W	0160 6W/12W	0160 9W/18W	0160 12W/24W



Remote & Inbuilt Driver Options

Ordering code : ERIxxx(model no)-Fx(finish)-Tx(trim)-xx(cable length)-xxx(voltage)-xx(IP)-xxxx(watt+cct+beam angle)-x(dimming)-xc(ip connectors)
Example : {600} {FS} {TR} {C1} {24V} {67} {327S} {A} {TC}