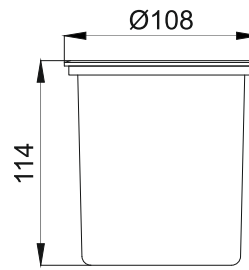
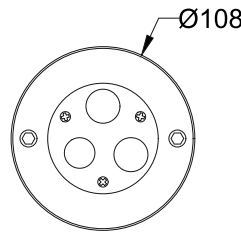
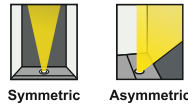




Hypogean R-3
ERI603



- Finish FS SS
FC Custom
- Cable Length C0.5 0.5 Meter
C1 1 Meter
CC Custom
- Voltage 24V DC24V
230V AC230V
- IP Rating 67 IP67

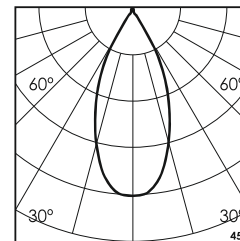
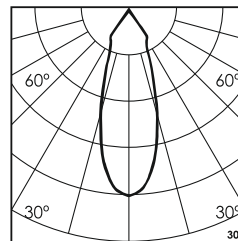
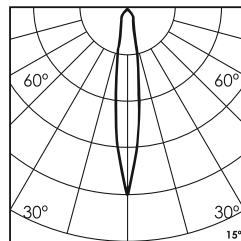
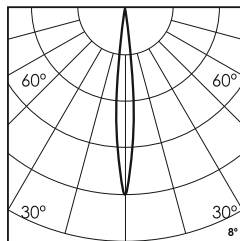
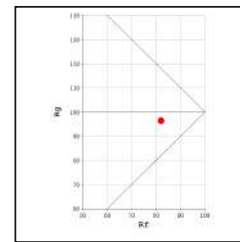
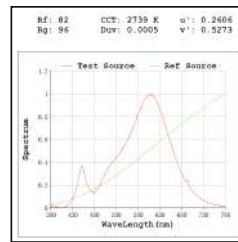
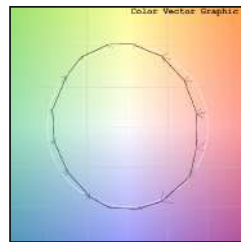
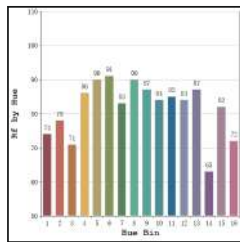


Unit : MM

Recessed Inground Light

Illumination Options

27W 27W 27W 27W 27W	3W/6W/9W	210lm/420lm/630lm	cct 2700K	8° 15° 30° 45° 60° Asy
30W 30W 30W 30W 30W		225lm/450lm/675lm	k 3000K	8° 15° 30° 45° 60° Asy
40W 40W 40W 40W 40W	3W/6W/9W	322lm/483lm/724lm	cct 4000K	8° 15° 30° 45° 60° Asy
RGB N RGB M RGB W RGB Asy		120lm/240lm/360lm	k RGB	8° 15° 30° 45° 60° Asy



* All degree & wattage options with photometric data available on request *
 * IP variants & list of accessories for this model available on request *

Technical Details

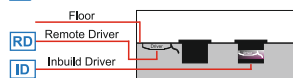
Housing	SS 316 / Aluminum die casting	LOR	~85%
Mounting	Recessed floor mounted	Operating voltage	24V/230V
Light Source	High Power LED	CRI (Ra)	>80
Weight	1005gms	MacAdam Ellipse	<3
Junction Temperature	Tj<75°C	Luminous Efficacy	~100lm/W
Heat Sink	AI6063	Life Time	L80-B10 50,000hrs.

Accessories

N Non Dimmable	<p>Ingress protection 67 Connectors</p> IC 'I' Connector TC 'T' Connector XC 'X' Connector
P Phase Cut Dimming	
A 0-10/ 1-10V Analog	
D DALI Dimming	

Other Products in this Series

026 - 1W	030 / 1250 1W-3W	030 / 1250 1W-3W	055 - 3W	0160 6W/12W	0160 9W/18W	0160 12W/24W



Remote & Inbuilt Driver Options

Ordering code : ERIxxx(model no)-Fx(finish)-xx(cable length)-xxx(voltage)-xx(IP)-xxxx(watt+cct+beam angle)-x(dimming)-xc(ip connectors)

Example : {603} {FS} {C1} {24V} {67} {927S}