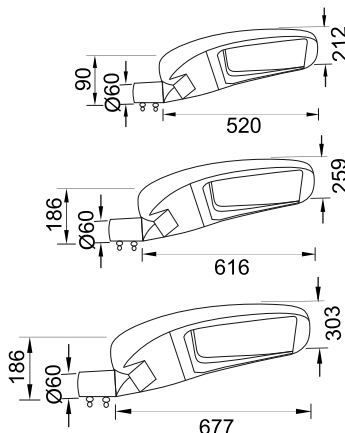




**Mia Stroll
ESL730**



Finish Options

Housing HG Grey
HB Black
HC Custom

IP Rating 65 IP65

Unit : MM

Street Light

Illumination Options

27	27
3.0	4.5
6.0	



30W/50W
60W/80W
120W/150W



3090lm/5150lm
6180lm/8240lm
12360lm/15450lm



2700K

30	30
3.0	4.5
6.0	



30W/50W
60W/80W
120W/150W



3240lm/5400lm
6480lm/8640lm
12960lm/16200lm



3000K

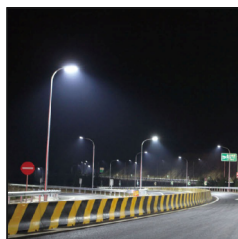
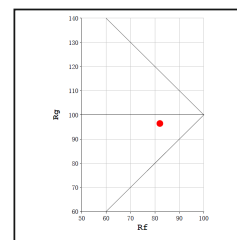
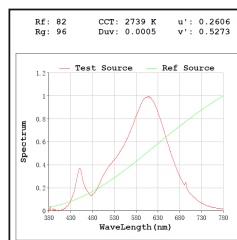
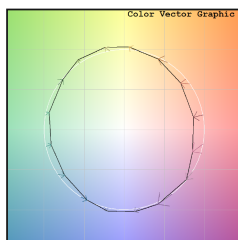
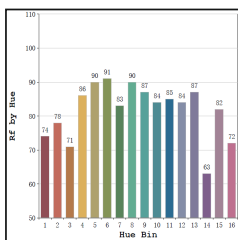
Pole height



3.0m 4.5m
6.0m



3.0m 4.5m
6.0m



* All degree & wattage options with photometric data available on request *
 * IP variants & list of accessories for this model available on request *

Technical Details

Housing	Aluminum die casting	LOR	~80%
Mounting	Street Light mounted	UGR	<19
Light Source	High Power LED	CRI (Ra)	>80
Pole height	3.0m/4.5m/6.0m	MacAdam Ellipse	<3
Junction Temperature	Tj<75°C	Luminous Efficacy	~75lm/W
Heat Sink	Al6063	Life Time	L80-B10 50,000hrs.

Accessories

Power Options

- N Non Dimmable
- P Phase Cut Dimming
- A 0-10/ 1-10V Analog
- D DALI Dimming

Other Products in this Series



**Mia Avenue
ESL729
L518xW228
30W/50W
L750xW322
80W/120W
L900xW386
150W/200W**

Ordering code : ESLxxx(model no)-Hx(housing)-xx(IP)-xxxxxx(watt+cct+pole height)-x(dimming)
 Example : {730} {HG} {65} {30273.0} {A}