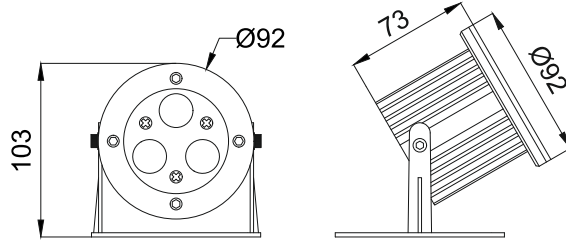




**Ortis S-3
ESU550**



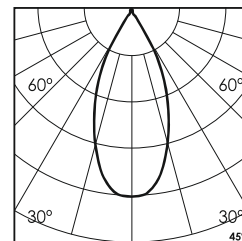
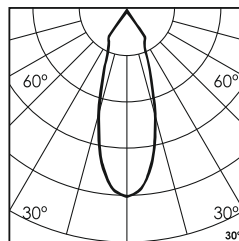
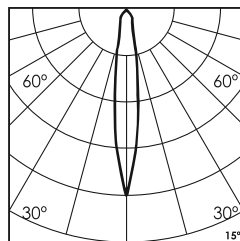
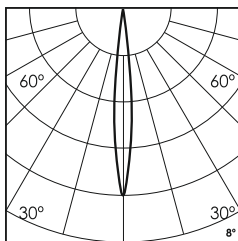
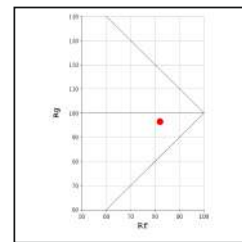
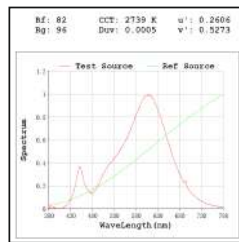
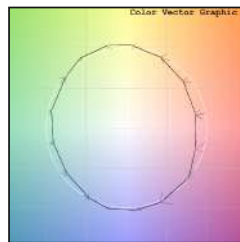
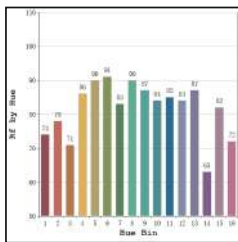
- Finish FS SS
- Cable Length C0.5 0.5 Meter
C1 1 Meter
CC Custom
- Voltage 24V DC24V
- IP Rating 68 IP68

Unit : MM

Surface Underwater Light

Illumination Options

<table border="1"> <tr><td>30M</td><td>30N</td><td>30S</td><td>30M</td><td>30W</td></tr> <tr><td>40M</td><td>40N</td><td>40S</td><td>40M</td><td>40W</td></tr> </table>	30M	30N	30S	30M	30W	40M	40N	40S	40M	40W	3W/6W/9W	315lm/630lm/945lm 330lm/660lm/990lm	<table border="1"> <tr><td>ccr</td><td>3000K</td></tr> <tr><td>k</td><td>4000K</td></tr> </table>	ccr	3000K	k	4000K	8° 15° 30° 45° 60° 8° 15° 30° 45° 60°					
30M	30N	30S	30M	30W																			
40M	40N	40S	40M	40W																			
ccr	3000K																						
k	4000K																						
<table border="1"> <tr><td>65N</td><td>65M</td><td>65S</td><td>65M</td><td>65W</td></tr> <tr><td>RGB</td><td>RGB</td><td>RGB</td><td>RGB</td><td>RGB</td></tr> <tr><td>N</td><td>N</td><td>S</td><td>M</td><td>W</td></tr> </table>	65N	65M	65S	65M	65W	RGB	RGB	RGB	RGB	RGB	N	N	S	M	W	3W/6W/9W	375lm/750lm/1125lm 180lm/360lm/540lm	<table border="1"> <tr><td>ccr</td><td>6500K</td></tr> <tr><td>k</td><td>RGB</td></tr> </table>	ccr	6500K	k	RGB	8° 15° 30° 45° 60° 8° 15° 30° 45° 60°
65N	65M	65S	65M	65W																			
RGB	RGB	RGB	RGB	RGB																			
N	N	S	M	W																			
ccr	6500K																						
k	RGB																						



* All degree & wattage options with photometric data available on request *
* IP variants & list of accessories for this model available on request *

Technical Details

Housing	SS 316 (316L available on request)	LOR	~85%
Mounting	Surface mounted	CRI (Ra)	>80
Light Source	High Power LED	MacAdam Ellipse	<3
Weight	590gms	Luminous Efficacy	~100lm/W
Junction Temperature	Tj>75°C (To be used only submerged underwater)	Life Time	L80-B10 50,000hrs.

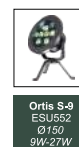
Accessories

- Power Options**
- N Non Dimmable
 - P Phase Cut Dimming
 - A 0-10/ 1-10V Analog
 - D DALI Dimming

Ingress protection 68 Connectors



Other Products in this Series



Ordering code : ESUxxx(model no)-Fx(finish)-xx(cable length)-xxx(voltage)-xx(IP)-xxxx(watt+cct+beam angle)-x(dimming)-xc(ip connectors)
Example : {550} {FS} {C1} {24V} {68} {930S} {A} {TC}