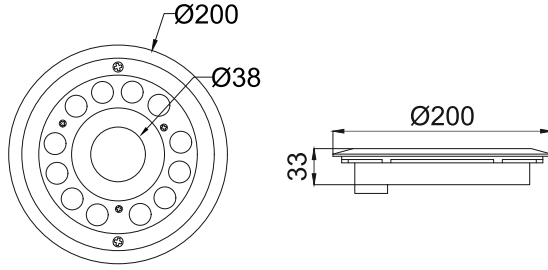




**Pixie F-12
 ESU556**



Water jet pipe



Fountain Light

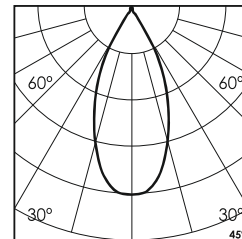
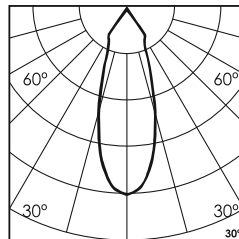
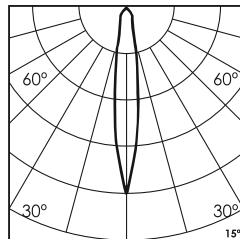
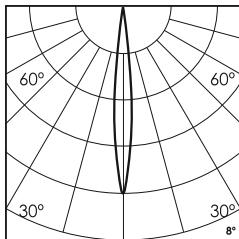
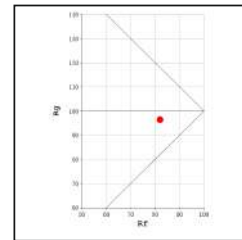
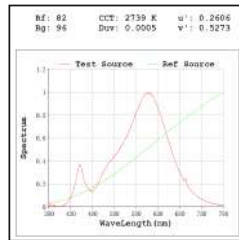
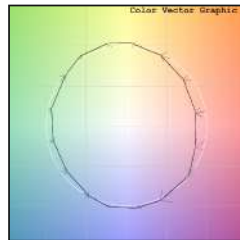
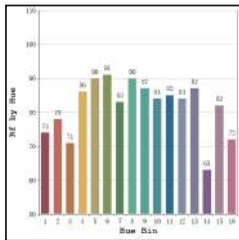
- Finish FS SS
- Cable Length C0.5 0.5 Meter
C1 1 Meter
CC Custom
- Voltage 24V DC24V
- IP Rating 68 IP68

Unit : MM

Surface Underwater Light

Illumination Options

- | | | | | | | | | | | | | | | | | | | | |
|--|-----|-----|-----|-----|-----|-----|-----|-----|-----|-----|-------------|--|----------------|--|---|-------------|---|--------------|--|
| <table border="1"> <tr><td>30W</td><td>30W</td><td>30W</td><td>30W</td><td>30W</td></tr> <tr><td>40W</td><td>40W</td><td>40W</td><td>40W</td><td>40W</td></tr> </table> | 30W | 30W | 30W | 30W | 30W | 40W | 40W | 40W | 40W | 40W | 12W/24W/36W | 1260lm/2520lm/3780lm
1320lm/2640lm/3960lm | 3000K
4000K | 8° 15° 30° 45° 60°
8° 15° 30° 45° 60° | | | | | |
| 30W | 30W | 30W | 30W | 30W | | | | | | | | | | | | | | | |
| 40W | 40W | 40W | 40W | 40W | | | | | | | | | | | | | | | |
| <table border="1"> <tr><td>65W</td><td>65W</td><td>65W</td><td>65W</td><td>65W</td></tr> <tr><td>RGB</td><td>RGB</td><td>RGB</td><td>RGB</td><td>RGB</td></tr> <tr><td>N</td><td>NT</td><td>S</td><td>M</td><td>W</td></tr> </table> | 65W | 65W | 65W | 65W | 65W | RGB | RGB | RGB | RGB | RGB | N | NT | S | M | W | 12W/24W/36W | 1500lm/3000lm/4500lm
720lm/1440lm/2160lm | 6500K
RGB | 8° 15° 30° 45° 60°
8° 15° 30° 45° 60° |
| 65W | 65W | 65W | 65W | 65W | | | | | | | | | | | | | | | |
| RGB | RGB | RGB | RGB | RGB | | | | | | | | | | | | | | | |
| N | NT | S | M | W | | | | | | | | | | | | | | | |



* All degree & wattage options with photometric data available on request *
 * IP variants & list of accessories for this model available on request *

Technical Details

Housing	SS 316 (316L available on request)	LOR	~85%
Mounting	Surface mounted	CRI (Ra)	>80
Light Source	High Power LED	MacAdam Ellipse	<3
Weight	1770gms	Luminous Efficacy	~100lm/W
Junction Temperature	Tj>75°C(To be used only submerged underwater)	Life Time	L80-B10 50,000hrs.

Accessories

- Power Options**
- N Non Dimmable
 - P Phase Cut Dimming
 - A 0-10/ 1-10V Analog
 - D DALI Dimming

Ingress protection 68 Connectors

- IC 'I' Connector
- TC 'T' Connector
- XC 'X' Connector

Other Products in this Series



**Pixie F-0
 ESU555
 Ø160
 3W-27W**

Ordering code : ESUxxx(model no)-Fx(finish)-xx(cable length)-xxx(voltage)-xx(IP)-xxxxx(watt+cct+beam angle)-x(dimming)-xc(ip connectors)
 Example : {556} {FS} {C1} {24V} {68} {3630S} {A} {TC}