

- Finish FS SS
- Cable Length C0.5 0.5 Meter
C1 1 Meter
CC Custom
- Voltage 24V DC24V
- IP Rating 68 IP68

**Pixie F-9
ESU555**



Water jet pipe LED Fountain Underwater Light

Unit : MM

Surface Underwater Light

Illumination Options

30M	30N	30S	30M	30W
40M	40N	40S	40M	40W



9W/18W/27W



945lm/1890lm/2835lm
990lm/1980lm/2970lm



3000K
4000K



8° 15° 30° 45° 60°
8° 15° 30° 45° 60°

65N	65M	65S	65M	65W
RGB	RGB	RGB	RGB	RGB
N	N	S	M	W



9W/18W/27W



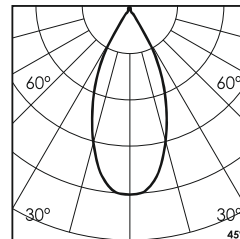
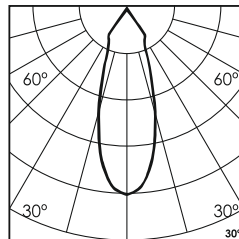
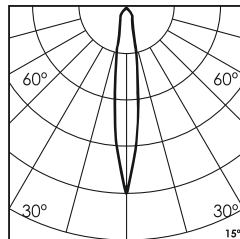
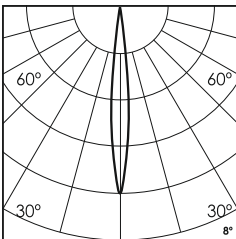
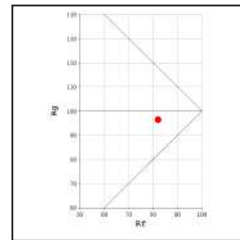
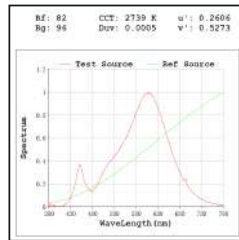
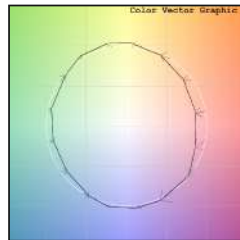
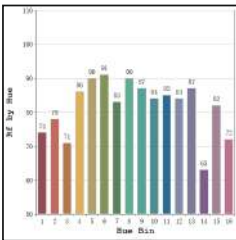
1125lm/2250lm/3375lm
540lm/1080lm/1620lm



6500K
RGB



8° 15° 30° 45° 60°
8° 15° 30° 45° 60°



* All degree & wattage options with photometric data available on request *
* IP variants & list of accessories for this model available on request *

Technical Details

Housing	SS 316 (316L available on request)	LOR	~85%
Mounting	Surface mounted	CRI (Ra)	>80
Light Source	High Power LED	MacAdam Ellipse	<3
Weight	1250gms	Luminous Efficacy	~100lm/W
Junction Temperature	Tj>75°C (To be used only submerged underwater)	Life Time	L80-B10 50,000hrs.

Accessories

Power Options

- N Non Dimmable
- P Phase Cut Dimming
- A 0-10/ 1-10V Analog
- D DALI Dimming

Ingress protection 68 Connectors

- IC 'I' Connector
- TC 'T' Connector
- XC 'X' Connector



**Pixie F-12
ESU556
Ø200
12W-36W**

Other Products in this Series

Ordering code : ESUxxx(model no)-Fx(finish)-xx(cable length)-xxx(voltage)-xx(IP)-xxxxx(watt+cct+beam angle)-x(dimming)-xc(ip connectors)
Example : {555} {FS} {C1} {24V} {68} {2730S} {A} {TC}