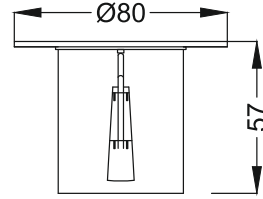
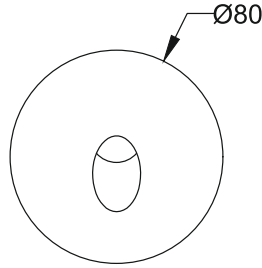


Que Point R
ERW691



Wall Recessed



Finish Options

- Housing
- HG Grey
 - HB Black
 - HC Custom

- IP Rating
- S4 IP54
 - S6 IP65

Unit : MM

Recessed Wall Light

Illumination Options

- 27
- 27



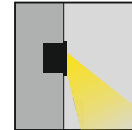
1W/3W



65lm/200lm



2700K



- 30
- 30



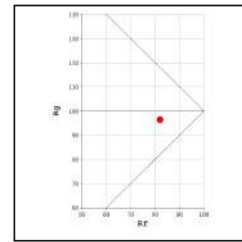
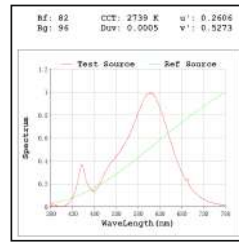
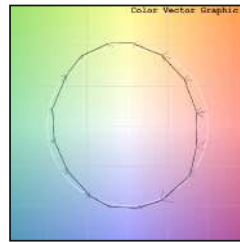
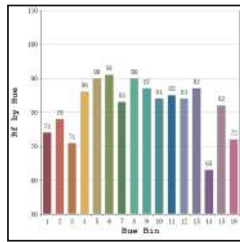
1W/3W



70lm/210lm



3000K



* All degree & wattage options with photometric data available on request *
* IP variants & list of accessories for this model available on request *

Technical Details

Housing	Aluminum die casting	LOR	~75%
Mounting	Wall mounted	UGR	<19
Light Source	SMD	CRI (Ra)	>80
Weight	255gms	MacAdam Ellipse	<3
Junction Temperature	Tj<75°C	Luminous Efficacy	~70lm/W
Heat Sink	Al6063	Life Time	L80-B10 50,000hrs.

Accessories

- Power Options
- N Non Dimmable
 - P Phase Cut Dimming
 - A 0-10/ 1-10V Analog
 - D DALI Dimming

Other Products in this Series



Que R ERW621 Ø85 - 1W/3W | Que S ERW683 L85xW85 1W/3W | Que Mini ERW686 L50xW80 1W/3W | Que Glow ERW688 Ø160 - 1W/3W | Que Point S ERW692 L80xW80 1W/3W

Ordering code : ERWxxx(model no)-Hx(housing)-xx(IP)-xxxx(watt+cct+beam angle)-x(dimming)
Example : {691} {HG} {65} {327S} {A}