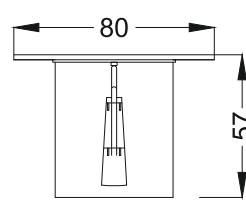
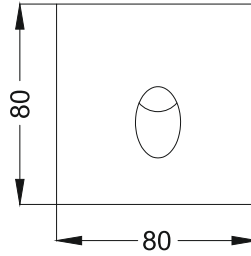
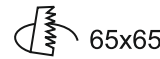




**Que Point S
ERW692**



Wall Recessed



65x65

Finish Options

Housing HG Grey
 HB Black
 HC Custom

IP Rating S4 IP54
 S5 IP65

Unit : MM

Recessed Wall Light

Illumination Options

27
 27



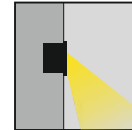
1W/3W



65lm/200lm



2700K



30
 30



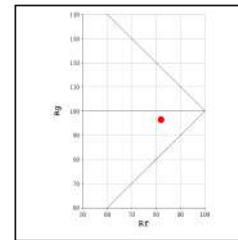
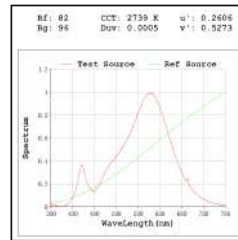
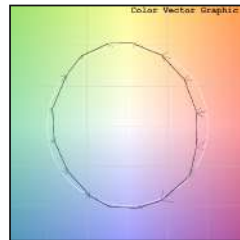
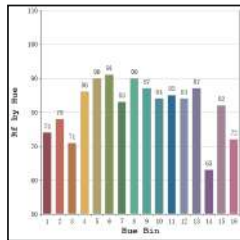
1W/3W



70lm/210lm



3000K



* All degree & wattage options with photometric data available on request *
* IP variants & list of accessories for this model available on request *

Technical Details

Housing	Aluminum die casting	LOR	~75%
Mounting	Wall mounted	UGR	<19
Light Source	SMD	CRI (Ra)	>80
Weight	255gms	MacAdam Ellipse	<3
Junction Temperature	Tj<75°C	Luminous Efficacy	~70lm/W
Heat Sink	Al6063	Life Time	L80-B10 50,000hrs.

Accessories **Other Products in this Series**

- Power Options**
- N Non Dimmable
 - P Phase Cut Dimming
 - A 0-10/ 1-10V Analog
 - D DALI Dimming

Que R ERW621 Ø85 - 1W/3W	Que S ERW683 L85xW85 1W/3W	Que Mini ERW686 L50xW80 1W/3W	Que Glow ERW688 Ø60 - 1W/3W	Que Point R ERW691 Ø80 - 1W/3W

Ordering code : ERWxxx(model no)-Hx(housing)-xx(IP)-xxxx(watt+cct+beam angle)-x(dimming)
Example : {692} {HG} {65} {327S} {A}