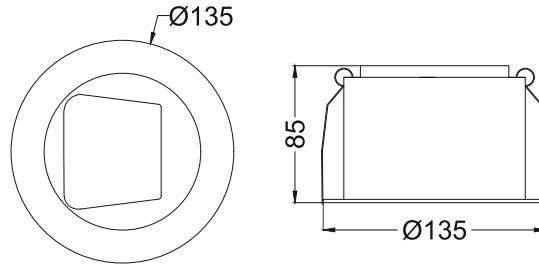




Regale 3
IRD785



Finish Options

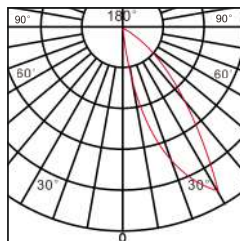
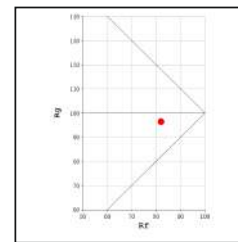
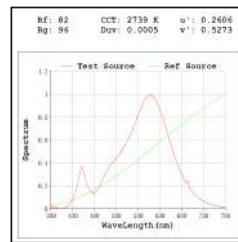
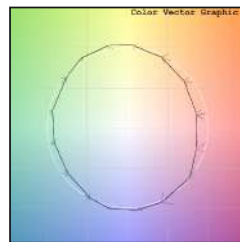
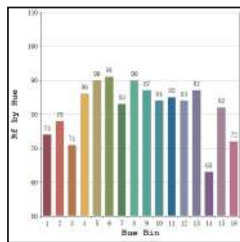
- Trim**
- TW White
 - TB Black
 - TC Custom
- Reflector**
- BW Wallwash
 - BB Dual Wallwash
 - BC Rectangular
- IP Rating** 44 IP44

Unit : MM

Recessed Fixed Wallwash Downlight

Illumination Options

- | | | | | | | | | |
|------------------------------|--|-----|--|--------|--|-------|--|------------|
| <input type="checkbox"/> 27A | | 35W | | 2275lm | | 2700K | | Asymmetric |
| <input type="checkbox"/> 30A | | 35W | | 2450lm | | 3000K | | Asymmetric |



* All degree & wattage options with photometric data available on request *
* IP variants & list of accessories for this model available on request *

Technical Details

| | | | |
|----------------------|--------------------------|-------------------|--------------------|
| Housing | Aluminum die casting | LOR | ~80% |
| Mounting | Spring - Ceiling mounted | UGR | <19 |
| Light Source | Single source COB LED | CRI (Ra) | >80 |
| Weight | 690gms | MacAdam Ellipse | <3 |
| Junction Temperature | Tj<75°C | Luminous Efficacy | ~75lm/W |
| Heat Sink | Al6063 | Life Time | L80-B10 50,000hrs. |

Accessories

- Power Options**
- N Non Dimmable
 - P Phase Cut Dimming
 - A 0-10/ 1-10V Analog
 - D DALI Dimming

Other Products in this Series



Ordering code : IRDxxx(model no)-Tx(trim)-Rx(reflector)-xx(IP)-xxxxx(watt+cct+beam angle)-(dimming)
Example : {785} {TW} {RW} {44} {3527S} {A}