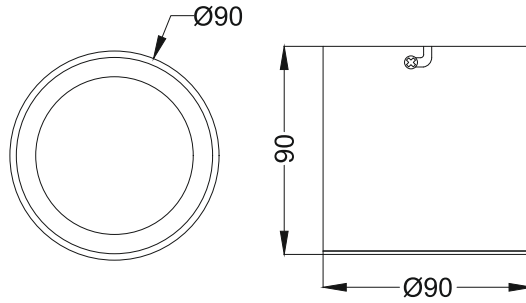




Seily R1
ISD540



Ceiling



NA

Finish Options

- Housing**
- HW White
 - HB Black
 - HC Custom
- Reflector**
- RN None
 - RS Specular
 - RP Pearl Black
- IP Rating**
- 20 IP20
 - 44 IP44

Unit : MM

Surface Fixed Downlight

Illumination Options



7W



490lm



2700K



15° 24°
38°



7W



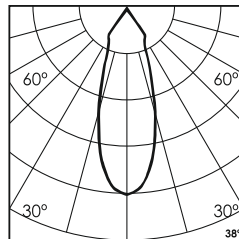
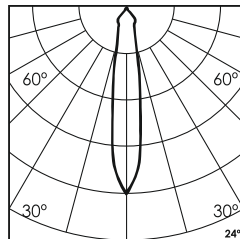
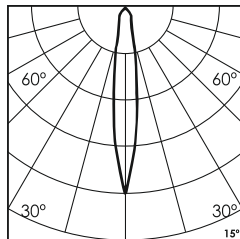
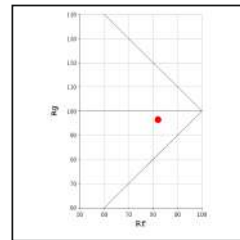
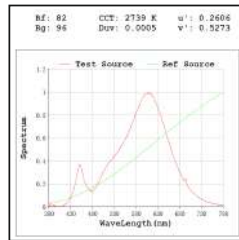
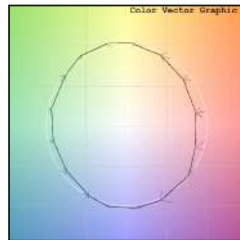
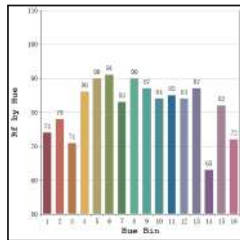
520lm



3000K



15° 24°
38°



* All degree & wattage options with photometric data available on request *
* IP variants & list of accessories for this model available on request *

Technical Details

Housing	Aluminum die casting	LOR	~80%
Mounting	Surface - Plate mounted	UGR	<19
Light Source	Single source LED COB	CRI (Ra)	>80
Weight	580gms	MacAdam Ellipse	<3
Junction Temperature	Tj<75°C	Luminous Efficacy	~75lm/W
Heat Sink	Al6063	Life Time	L80-B10 50,000hrs.

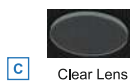
Accessories

Power Options

- N Non Dimmable
- P Phase Cut Dimming
- A 0-10/ 1-10V Analog
- D DALI Dimming



D Diffused Lens



C Clear Lens

Other Products in this Series



Ordering code : ISDxxx(model no)-Hx(housing)-Rx(reflector)-xx(IP)-xxxx(watt+cct+beam angle)-x(dimming)-x(filter)
Example : {540} {HW} {RS} {20} {727S} {A} {D}