

Finish Options

- Housing**
- HW White
 - HB Black
 - HC Custom
- Reflector**
- RN None
 - RS Specular
 - RP Pearl Black
- IP Rating**
- 20 IP20
 - 44 IP44

Seily R2
ISD323

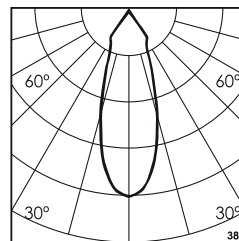
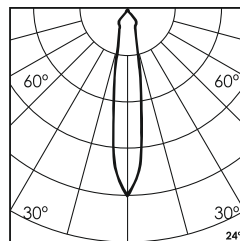
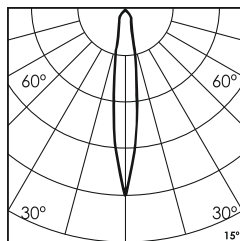
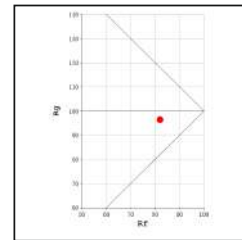
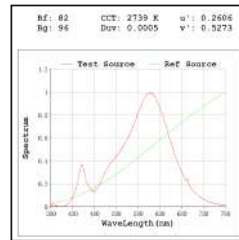
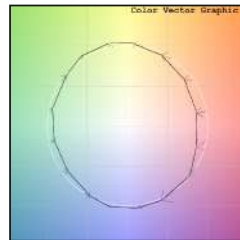
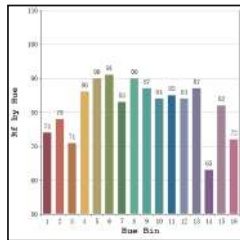


Unit : MM

Surface Fixed Downlight

Illumination Options

- | | | | | | | | | |
|--|--|-----|--|-------|--|-------|--|----------------|
| <input type="checkbox"/> 27N
<input type="checkbox"/> 27S | | 10W | | 690lm | | 2700K | | 15° 24°
38° |
| <input type="checkbox"/> 30N
<input type="checkbox"/> 30S | | 10W | | 740lm | | 3000K | | 15° 24°
38° |



* All degree & wattage options with photometric data available on request *
* IP variants & list of accessories for this model available on request *

Technical Details

Housing	Aluminum die casting	LOR	~80%
Mounting	Surface - Plate mounted	UGR	<19
Light Source	Single source LED COB	CRI (Ra)	>80
Weight	630gms	MacAdam Ellipse	<3
Junction Temperature	Tj<75°C	Luminous Efficacy	~75lm/W
Heat Sink	Al6063	Life Time	L80-B10 50,000hrs.

Accessories

- Power Options**
- N Non Dimmable
 - P Phase Cut Dimming
 - A 0-10/ 1-10V Analog
 - D DALI Dimming



Other Products in this Series



Ordering code : ISDxxx(model no)-Hx(housing)-Rx(reflector)-xx(IP)-xxxxx(watt+cct+beam angle)-x(dimming)-x(filter)
Example : {323} {HW} {RS} {20} {1027S} {A} {D}