

**Finish Options**

- Housing**  HW White  
 HB Black  
 HC Custom
- Reflector**  RN None  
 RS Specular  
 RP Pearl Black
- IP Rating**  20 IP20  
 44 IP44

**Seilly R3  
 ISD324**

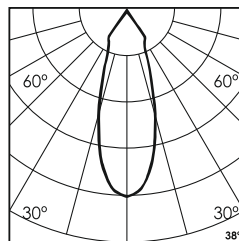
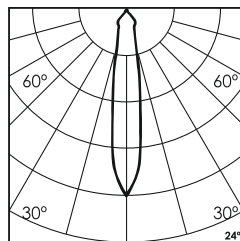
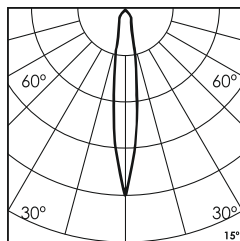
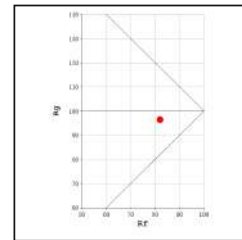
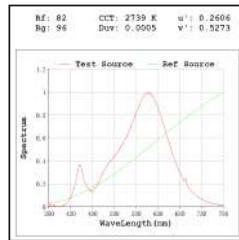
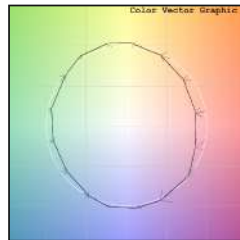
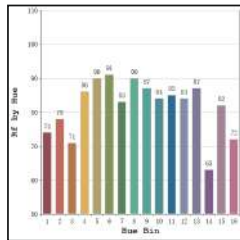


Unit : MM

**Surface Fixed Downlight**

**Illumination Options**

- |  |  |     |                             |        |  |       |  |                |
|--|--|-----|-----------------------------|--------|--|-------|--|----------------|
| <input type="checkbox"/> 27N<br><input type="checkbox"/> 27S |  | 20W | <input type="checkbox"/> 1m | 1430lm |  | 2700K |  | 15° 24°<br>38° |
| <input type="checkbox"/> 30N<br><input type="checkbox"/> 30S |  | 20W | <input type="checkbox"/> 1m | 1480lm |  | 3000K |  | 15° 24°<br>38° |



\* All degree & wattage options with photometric data available on request \*  
 \* IP variants & list of accessories for this model available on request \*

**Technical Details**

Housing	Aluminum die casting	LOR	~80%
Mounting	Surface - Plate mounted	UGR	<19
Light Source	Single source LED COB	CRI (Ra)	>80
Weight	692gms	MacAdam Ellipse	<3
Junction Temperature	Tj<75°C	Luminous Efficacy	~75lm/W
Heat Sink	Al6063	Life Time	L80-B10 50,000hrs.

**Accessories** **Other Products in this Series**

- Power Options**
- N Non Dimmable  
 P Phase Cut Dimming  
 A 0-10/ 1-10V Analog  
 D DALI Dimming



Ordering code : ISDxxx(model no)-Hx(housing)-Rx(reflector)-xx(IP)-xxxxx(watt+cct+beam angle)-x(dimming)-x(filter)  
 Example : {324} {HW} {RS} {20} {2027S} {A} {D}