

Finish Options

- Housing** HW White
 HB Black
 HC Custom
- Reflector** RN None
 RS Specular
 RP Pearl Black
- IP Rating** 20 IP20
 44 IP44

**Seily R4
ISD325**

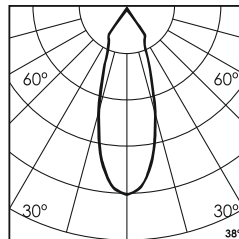
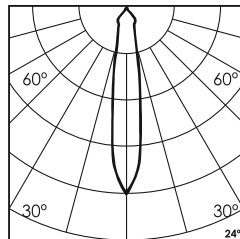
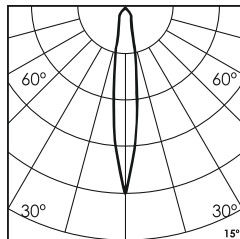
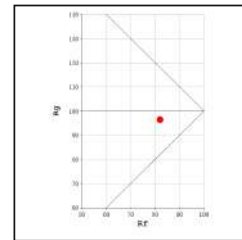
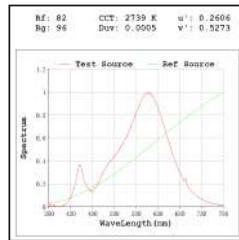
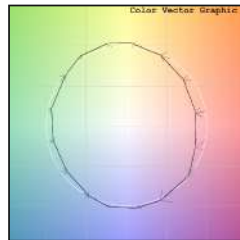
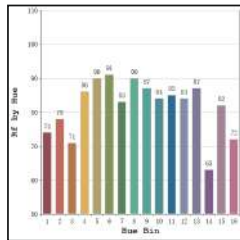


Unit : MM

Surface Fixed Downlight

Illumination Options

- | | | | | | | | | |
|--------------------------------------------------------------|--|-----|--|--------|--|-------|--|----------------|
| <input type="checkbox"/> 27N
<input type="checkbox"/> 27S | | 30W | | 2170lm | | 2700K | | 15° 24°
38° |
| <input type="checkbox"/> 30N
<input type="checkbox"/> 30S | | 30W | | 2220lm | | 3000K | | 15° 24°
38° |



* All degree & wattage options with photometric data available on request *
 * IP variants & list of accessories for this model available on request *

Technical Details

Housing	Aluminum die casting	LOR	~80%
Mounting	Surface - Plate mounted	UGR	<19
Light Source	Single source LED COB	CRI (Ra)	>80
Weight	1260gms	MacAdam Ellipse	<3
Junction Temperature	Tj<75°C	Luminous Efficacy	~75lm/W
Heat Sink	Al6063	Life Time	L80-B10 50,000hrs.

Accessories **Other Products in this Series**

- Power Options**
- N Non Dimmable
 P Phase Cut Dimming
 A 0-10/ 1-10V Analog
 D DALI Dimming



Ordering code : ISDxxx(model no)-Hx(housing)-Rx(reflector)-xx(IP)-xxxxx(watt+cct+beam angle)-x(dimming)-x(filter)
 Example : {325} {HW} {RS} {20} {3027S} {A} {D}