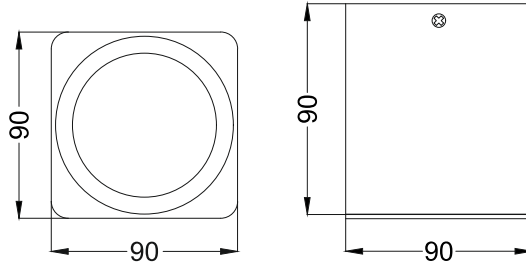




**Seily S1**  
**ISD541**



Ceiling



NA

**Finish Options**

- Housing**  HW White  
 HB Black  
 HC Custom
- Reflector**  RN None  
 RS Specular  
 RP Pearl Black
- IP Rating**  20 IP20  
 44 IP44

Unit : MM

**Surface Fixed Downlight**

**Illumination Options**



7W



490lm



2700K



15° 24°  
 38°



7W



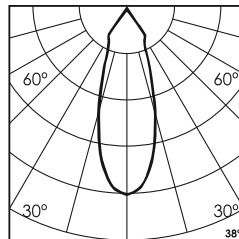
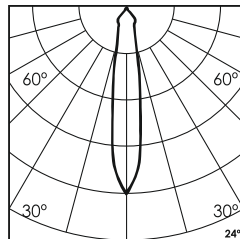
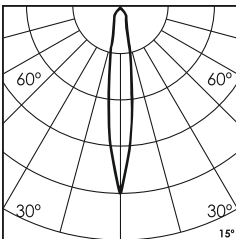
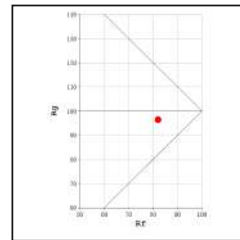
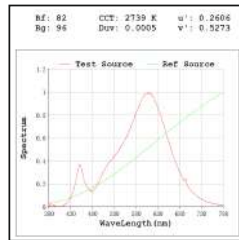
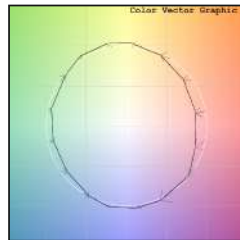
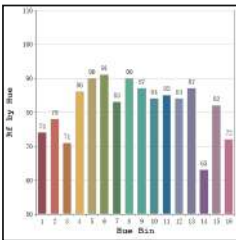
520lm



3000K



15° 24°  
 38°



\* All degree & wattage options with photometric data available on request \*  
 \* IP variants & list of accessories for this model available on request \*

**Technical Details**

Housing	Aluminum die casting	LOR	~80%
Mounting	Surface - Plate mounted	UGR	<19
Light Source	Single source LED COB	CRI (Ra)	>80
Weight	535gms	MacAdam Ellipse	<3
Junction Temperature	Tj<75°C	Luminous Efficacy	~75lm/W
Heat Sink	Al6063	Life Time	L80-B10 50,000hrs.

**Accessories**

**Power Options**

- N Non Dimmable  
 P Phase Cut Dimming  
 A 0-10/ 1-10V Analog  
 D DALI Dimming



D Diffused Lens



C Clear Lens

**Other Products in this Series**



Ordering code : ISDxxx(model no)-Hx(housing)-Rx(reflector)-xx(IP)-xxxx(watt+cct+beam angle)-x(dimming)-x(filter)  
 Example : {541} {HW} {RS} {20} {727S} {A} {D}