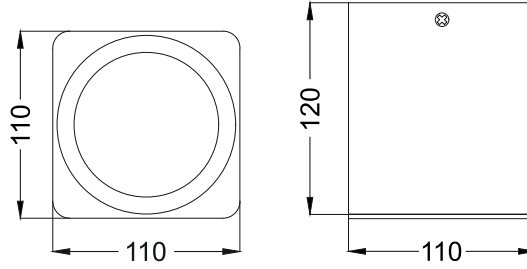




Seily S2
ISD327



Ceiling



Finish Options

- Housing**
- HW White
 - HB Black
 - HC Custom
- Reflector**
- RN None
 - RS Specular
 - RP Pearl Black
- IP Rating**
- 20 IP20
 - 44 IP44

Unit : MM

Surface Fixed Downlight

Illumination Options



10W



690lm



2700K



15° 24°
38°



10W



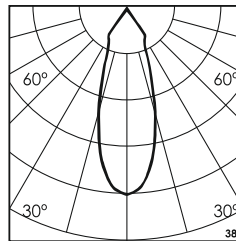
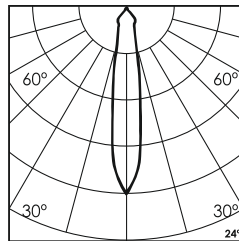
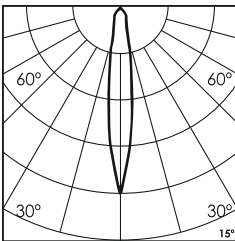
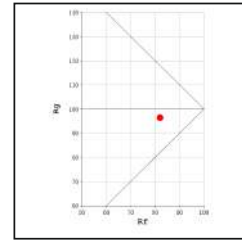
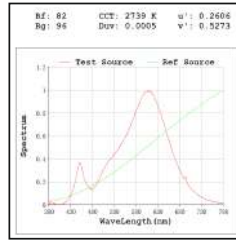
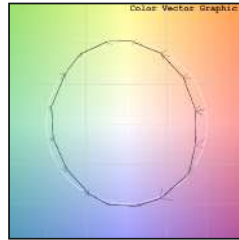
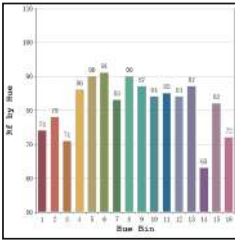
740lm



3000K



15° 24°
38°



* All degree & wattage options with photometric data available on request *
 * IP variants & list of accessories for this model available on request *

Technical Details

| | | | |
|----------------------|-------------------------|-------------------|--------------------|
| Housing | Aluminum die casting | LOR | ~80% |
| Mounting | Surface - Plate mounted | UGR | <19 |
| Light Source | Single source LED COB | CRI (Ra) | >80 |
| Weight | 567gms | MacAdam Ellipse | <3 |
| Junction Temperature | Tj<75°C | Luminous Efficacy | ~75lm/W |
| Heat Sink | Al6063 | Life Time | L80-B10 50,000hrs. |

Accessories

Power Options

- N Non Dimmable
- P Phase Cut Dimming
- A 0-10/ 1-10V Analog
- D DALI Dimming



D Diffused Lens



C Clear Lens

Other Products in this Series



Ordering code : ISDxxx(model no)-Hx(housing)-Rx(reflector)-xx(IP)-xxxxx(watt+cct+beam angle)-x(dimming)-x(filter)
 Example : {327} {HW} {RS} {20} {1027S} {A} {D}