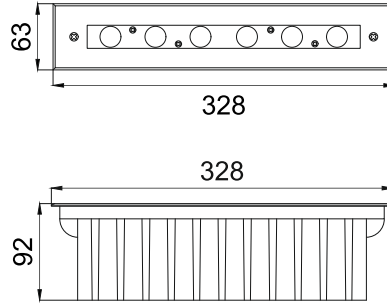




**Shuays L-6  
ERU554**



Finish FS SS

Cable Length C0.5 0.5 Meter  
C1 1 Meter  
CC Custom

Voltage 24V DC24V

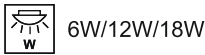
IP Rating 68 IP68

Unit : MM

**Recessed Underwater Light**

**Illumination Options**

30N	30S	30M	30 Asy
40N	40S	40M	40 Asy

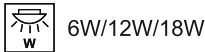


630lm/1260lm/1890lm  
660lm/1320lm/1980lm

cct	3000K
k	4000K

15°	30°	45°	Asy
15°	30°	45°	Asy

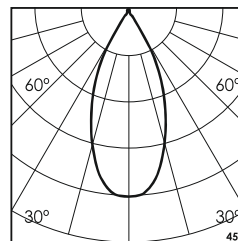
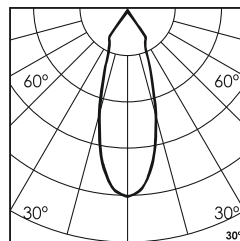
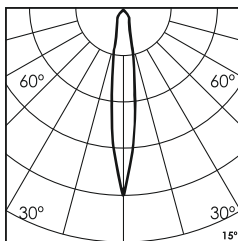
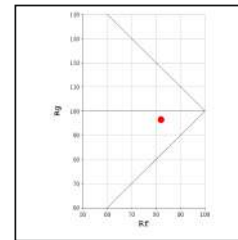
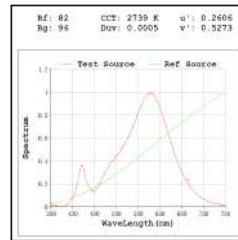
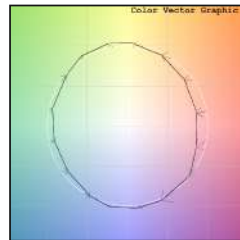
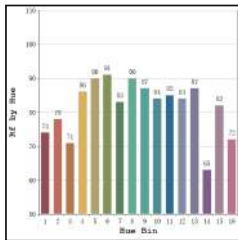
65N	65S	65M	65 Asy
RGB N	RGB S	RGB M	RGB Asy



750lm/1500lm/2250lm  
360lm/720lm/1080lm

cct	6500K
k	RGB

15°	30°	45°	Asy
15°	30°	45°	Asy



**Technical Details**

Housing	SS 316 (316L available on request)	LOR	~85%
Mounting	Recessed mounted	CRI (Ra)	>80
Light Source	High Power LED	MacAdam Ellipse	<3
Weight	900gms	Luminous Efficacy	~100lm/W
Junction Temperature	Tj>75°C (To be used only submerged underwater)	Life Time	L80-B10 50,000hrs.

**Accessories**

**Power Options**

<span style="border: 1px solid black; padding: 0 2px;">N</span>	Non Dimmable
<span style="border: 1px solid black; padding: 0 2px;">P</span>	Phase Cut Dimming
<span style="border: 1px solid black; padding: 0 2px;">A</span>	0-10/ 1-10V Analog
<span style="border: 1px solid black; padding: 0 2px;">D</span>	DALI Dimming

**Ingress protection 68 Connectors**

<span style="border: 1px solid black; padding: 0 2px;">IC</span> 'I' Connector	<span style="border: 1px solid black; padding: 0 2px;">TC</span> 'T' Connector	<span style="border: 1px solid black; padding: 0 2px;">XC</span> 'X' Connector

**Other Products in this Series**

Shuays Micro ERU542 Ø42 1W-3W	Shuays R-1 ERU543 Ø65 1W-3W	Shuays R-3 ERU544 Ø115 3W-9W	Shuays R-6 ERU545 Ø160 6W-18W	Shuays R-9 ERU546 Ø180 9W-27W	Shuays R-12 ERU547 Ø180 12W-36W	Shuays R-18 ERU548 Ø200 18W-54W

\* All degree & wattage options with photometric data available on request \*  
\* IP variants & list of accessories for this model available on request \*

Ordering code : ERUxxx(model no)-Fx(finish)-xx(cable length)-xxx(voltage)-xx(IP)-xxxxx(watt+cct+beam angle)-x(dimming)-xc(ip connectors)  
Example : {554} {FS} {C1} {24V} {68} {1830S} {A} {TC}