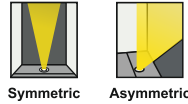


- Finish FS SS
- Cable Length C0.5 0.5 Meter
C1 1 Meter
CC Custom
- Voltage 24V DC24V
- IP Rating 68 IP68

Shuays Micro ERU542

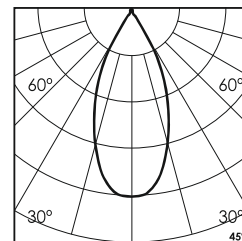
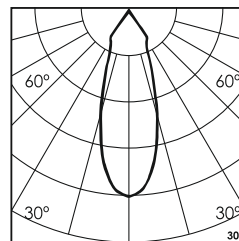
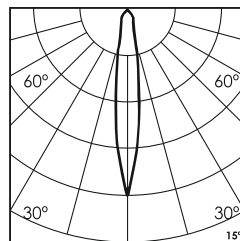
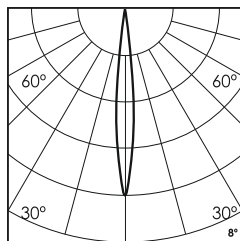
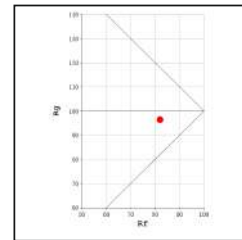
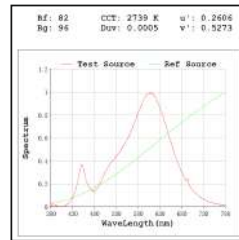
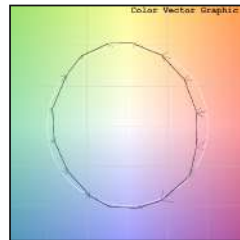
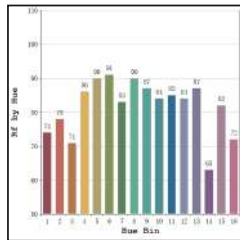


Unit : MM

Recessed Underwater Light

Illumination Options

<table border="1"> <tr><td>30M</td><td>30N</td><td>30S</td><td>30M</td><td>30 Asy</td></tr> <tr><td>40M</td><td>40N</td><td>40S</td><td>40M</td><td>40 Asy</td></tr> </table>	30M	30N	30S	30M	30 Asy	40M	40N	40S	40M	40 Asy	1W/2W/3W	105lm/210lm/315lm 110lm/220lm/330lm	<table border="1"> <tr><td>CCT</td><td>3000K</td></tr> <tr><td>K</td><td>4000K</td></tr> </table>	CCT	3000K	K	4000K	8° 15° 30° 45° Asy 8° 15° 30° 45° Asy
30M	30N	30S	30M	30 Asy														
40M	40N	40S	40M	40 Asy														
CCT	3000K																	
K	4000K																	
<table border="1"> <tr><td>65N</td><td>65M</td><td>65S</td><td>65M</td><td>65 Asy</td></tr> <tr><td>RGB N</td><td>RGB S</td><td>RGB M</td><td>RGB M</td><td>RGB Asy</td></tr> </table>	65N	65M	65S	65M	65 Asy	RGB N	RGB S	RGB M	RGB M	RGB Asy	1W/2W/3W	125lm/250lm/375lm 60lm/120lm/180lm	<table border="1"> <tr><td>CCT</td><td>6500K</td></tr> <tr><td>K</td><td>RGB</td></tr> </table>	CCT	6500K	K	RGB	8° 15° 30° 45° Asy 8° 15° 30° 45° Asy
65N	65M	65S	65M	65 Asy														
RGB N	RGB S	RGB M	RGB M	RGB Asy														
CCT	6500K																	
K	RGB																	



* All degree & wattage options with photometric data available on request *
* IP variants & list of accessories for this model available on request *

Technical Details

Housing	SS 316 (316L available on request)	LOR	~85%
Mounting	Recessed mounted	CRI (Ra)	>80
Light Source	High Power LED	MacAdam Ellipse	<3
Weight	290gms	Luminous Efficacy	~100lm/W
Junction Temperature	Tj>75°C (To be used only submerged underwater)	Life Time	L80-B10 50,000hrs.

Accessories

- Power Options**
- N Non Dimmable
 - P Phase Cut Dimming
 - A 0-10/ 1-10V Analog
 - D DALI Dimming

- Ingress protection 68 Connectors**
- IC 'I' Connector
 - TC 'T' Connector
 - XC 'X' Connector

Other Products in this Series

--	--	--	--	--	--	--

Ordering code : ERUxxx(model no)-Fx(finish)-xx(cable length)-xxx(voltage)-xx(IP)-xxxx(watt+cct+beam angle)-x(dimming)-xc(ip connectors)
 Example : {542} {FS} {C1} {24V} {68} {330S} {A} {TC}