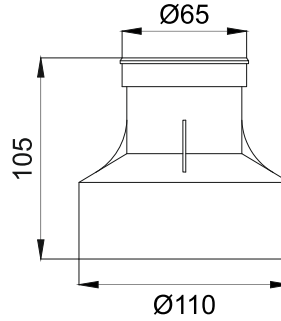
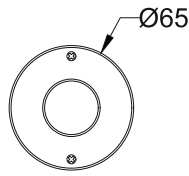




**Shuays R-1
ERU543**



Finish FS SS

Cable Length C0.5 0.5 Meter
 C1 1 Meter
 CC Custom

Voltage 24V DC24V

IP Rating 68 IP68



Symmetric Asymmetric



Unit : MM

Recessed Underwater Light

Illumination Options

30M 30N 30S 30M 30 Asy
 40M 40N 40S 40M 40 Asy

1W/2W/3W

105lm/210lm/315lm
 110lm/220lm/330lm

CCT 3000K
 4000K

8° 15° 30° 45° Asy
 8° 15° 30° 45° Asy

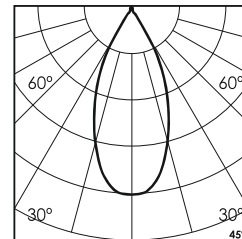
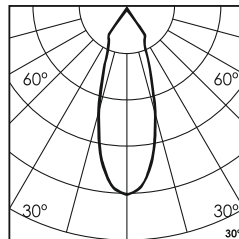
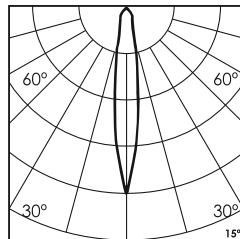
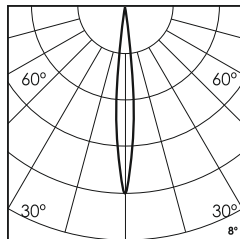
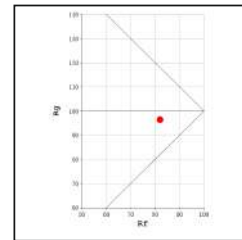
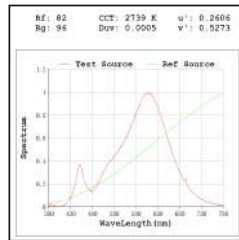
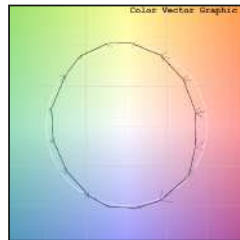
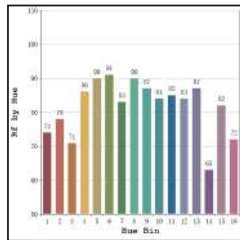
65N 65M 65S 65M 65 Asy
 RGB N RGB NT S M RGB Asy

1W/2W/3W

125lm/250lm/375lm
 60lm/120lm/180lm

CCT 6500K
 RGB

8° 15° 30° 45° Asy
 8° 15° 30° 45° Asy



* All degree & wattage options with photometric data available on request *
* IP variants & list of accessories for this model available on request *

Technical Details

Housing	SS 316 (316L available on request)	LOR	~85%
Mounting	Recessed mounted	CRI (Ra)	>80
Light Source	High Power LED	MacAdam Ellipse	<3
Weight	360gms	Luminous Efficacy	~100lm/W
Junction Temperature	Tj>75°C (To be used only submerged underwater)	Life Time	L80-B10 50,000hrs.

Accessories

Power Options

N Non Dimmable
 P Phase Cut Dimming
 A 0-10/ 1-10V Analog
 D DALI Dimming

Ingress protection 68 Connectors

I 'I' Connector T 'T' Connector X 'X' Connector

Other Products in this Series

Shuays Micro ERU542 Ø42 1W-3W	Shuays R-3 ERU544 Ø115 3W-9W	Shuays R-6 ERU545 Ø160 6W-18W	Shuays R-9 ERU546 Ø160 9W-27W	Shuays R-12 ERU547 Ø180 12W-36W	Shuays R-18 ERU548 Ø200 18W-54W	Shuays L-6 ERU554 L328xW63 6W-18W

Ordering code : ERUxxx(model no)-Fx(finish)-xx(cable length)-xxx(voltage)-xx(IP)-xxxx(watt+cct+beam angle)-x(dimming)-xc(ip connectors)
Example : {543} {FS} {C1} {24V} {68} {330S} {A} {TC}