

- Finish FS SS
- Cable Length C0.5 0.5 Meter
C1 1 Meter
CC Custom
- Voltage 24V DC24V
- IP Rating 68 IP68

**Shuays R-18
ERU548**

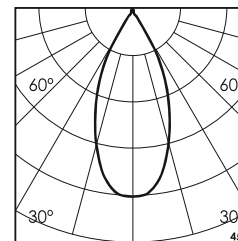
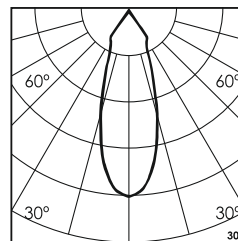
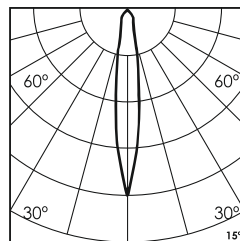
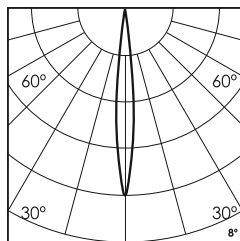
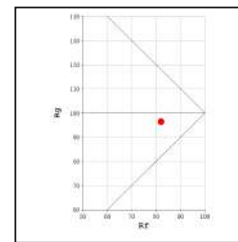
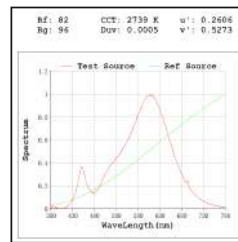
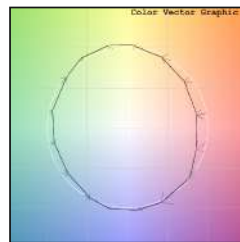
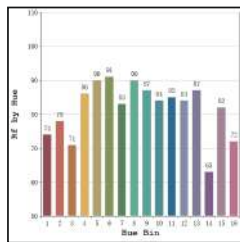


Unit : MM

Recessed Underwater Light

Illumination Options

<table border="1"> <tr><td>30M</td><td>30N</td><td>30S</td><td>30M</td><td>30</td></tr> <tr><td>40M</td><td>40N</td><td>40S</td><td>40M</td><td>40</td></tr> </table> <table border="1"> <tr><td>65N</td><td>65M</td><td>65S</td><td>65M</td><td>65</td></tr> <tr><td>RGB</td><td>RGB</td><td>RGB</td><td>RGB</td><td>ASy</td></tr> <tr><td>N</td><td>NT</td><td>S</td><td>M</td><td>ASy</td></tr> </table>	30M	30N	30S	30M	30	40M	40N	40S	40M	40	65N	65M	65S	65M	65	RGB	RGB	RGB	RGB	ASy	N	NT	S	M	ASy	18W/36W/54W	1890lm/3780lm/5670lm 1980lm/3960lm/5940lm	<table border="1"> <tr><td>3000K</td></tr> <tr><td>4000K</td></tr> </table>	3000K	4000K	8° 15° 30° 45° Asy 8° 15° 30° 45° Asy
30M	30N	30S	30M	30																											
40M	40N	40S	40M	40																											
65N	65M	65S	65M	65																											
RGB	RGB	RGB	RGB	ASy																											
N	NT	S	M	ASy																											
3000K																															
4000K																															
<table border="1"> <tr><td>65N</td><td>65M</td><td>65S</td><td>65M</td><td>65</td></tr> <tr><td>RGB</td><td>RGB</td><td>RGB</td><td>RGB</td><td>ASy</td></tr> <tr><td>N</td><td>NT</td><td>S</td><td>M</td><td>ASy</td></tr> </table>	65N	65M	65S	65M	65	RGB	RGB	RGB	RGB	ASy	N	NT	S	M	ASy	18W/36W/54W	2250lm/3000lm/4500lm 1080lm/2160lm/3240lm	<table border="1"> <tr><td>6500K</td></tr> <tr><td>RGB</td></tr> </table>	6500K	RGB	8° 15° 30° 45° Asy 8° 15° 30° 45° Asy										
65N	65M	65S	65M	65																											
RGB	RGB	RGB	RGB	ASy																											
N	NT	S	M	ASy																											
6500K																															
RGB																															



* All degree & wattage options with photometric data available on request *
* IP variants & list of accessories for this model available on request *

Technical Details

Housing	SS 316 (316L available on request)	LOR	~85%
Mounting	Recessed mounted	CRI (Ra)	>80
Light Source	High Power LED	MacAdam Ellipse	<3
Weight	1890gms	Luminous Efficacy	~100lm/W
Junction Temperature	Tj>75°C (To be used only submerged underwater)	Life Time	L80-B10 50,000hrs.

Accessories

- Power Options**
- N Non Dimmable
 - P Phase Cut Dimming
 - A 0-10/ 1-10V Analog
 - D DALI Dimming

- Ingress protection 68 Connectors**
- IC 'I' Connector
 - TC 'T' Connector
 - XC 'X' Connector

Other Products in this Series

Shuays Micro ERU542 Ø42 1W-3W	Shuays R-1 ERU543 Ø65 1W-3W	Shuays R-3 ERU544 Ø115 3W-9W	Shuays R-6 ERU545 Ø160 6W-18W	Shuays R-9 ERU546 Ø180 9W-27W	Shuays R-12 ERU547 Ø180 12W-36W	Shuays L-6 ERU554 L328xW63 6W-18W

Ordering code : ERUxxx(model no)-Fx(finish)-xx(cable length)-xxx(voltage)-xx(IP)-xxxxx(watt+cct+beam angle)-x(dimming)-xc(ip connectors)
Example : {548} {FS} {C1} {24V} {68} {5430S} {A} {TC}