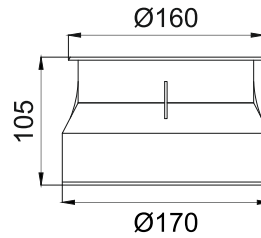
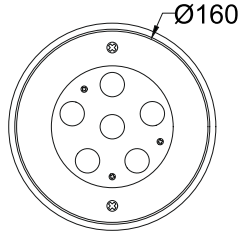




**Shuays R-6
ERU545**



Finish FS SS

Cable Length C0.5 0.5 Meter
C1 1 Meter
CC Custom

Voltage 24V DC24V

IP Rating 68 IP68



Unit : MM

Recessed Underwater Light

Illumination Options

30N	30S	30M	30 Asy
40N	40S	40M	40 Asy

6W/12W/18W



630lm/1260lm/1890lm
660lm/1320lm/1980lm



3000K
4000K



15° 30° 45° Asy
15° 30° 45° Asy

65N	65S	65M	65 Asy
RGB N	RGB S	RGB M	RGB Asy

6W/12W/18W



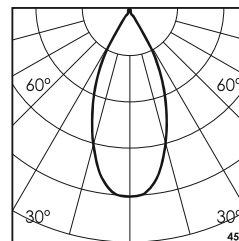
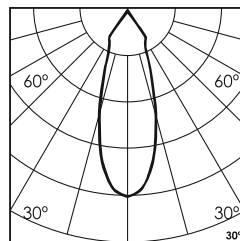
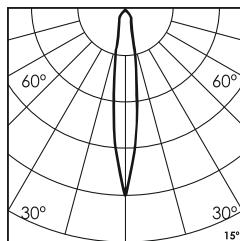
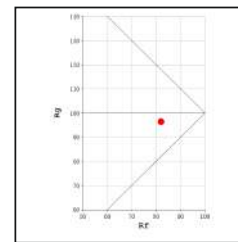
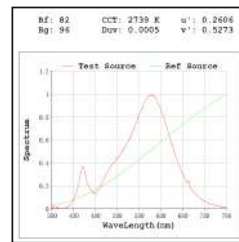
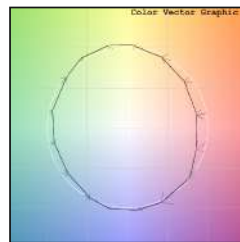
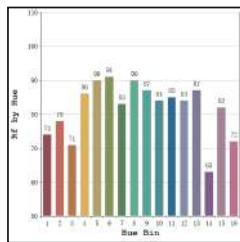
750lm/1500lm/2250lm
360lm/720lm/1080lm



6500K
RGB



15° 30° 45° Asy
15° 30° 45° Asy



Technical Details

Housing	SS 316 (316L available on request)	LOR	~85%
Mounting	Recessed mounted	CRI (Ra)	>80
Light Source	High Power LED	MacAdam Ellipse	<3
Weight	770gms	Luminous Efficacy	~100lm/W
Junction Temperature	Tj>75°C (To be used only submerged underwater)	Life Time	L80-B10 50,000hrs.

Accessories

Power Options

N Non Dimmable
P Phase Cut Dimming
A 0-10/ 1-10V Analog
D DALI Dimming

Ingress protection 68 Connectors

IC 'I' Connector TC 'T' Connector XC 'X' Connector

Other Products in this Series

Shuays Micro ERU542 Ø42 1W-3W	Shuays R-1 ERU543 Ø65 1W-3W	Shuays R-3 ERU544 Ø115 3W-9W	Shuays R-9 ERU546 Ø160 9W-27W	Shuays R-12 ERU547 Ø180 12W-36W	Shuays R-18 ERU548 Ø200 18W-54W	Shuays L-6 ERU554 L328xW63 6W-18W

* All degree & wattage options with photometric data available on request *
* IP variants & list of accessories for this model available on request *

Ordering code : ERUxxx(model no)-Fx(finish)-xx(cable length)-xxx(voltage)-xx(IP)-xxxxx(watt+cct+beam angle)-x(dimming)-xc(ip connectors)
Example : {545} {FS} {C1} {24V} {68} {1830S} {A} {TC}