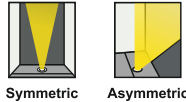
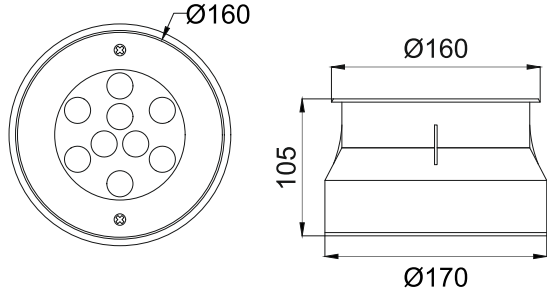




**Shuays R-9  
ERU546**



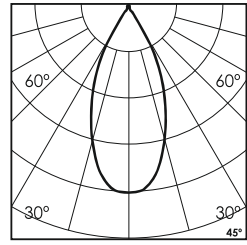
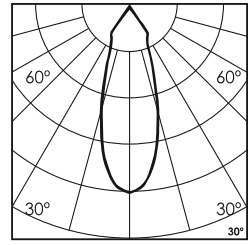
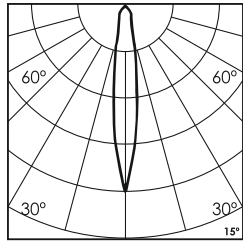
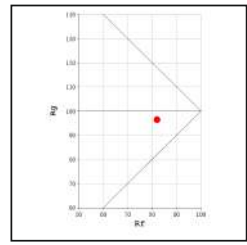
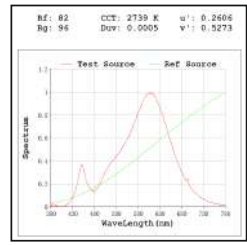
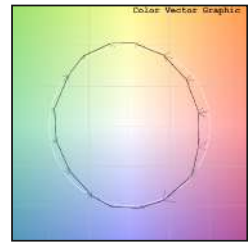
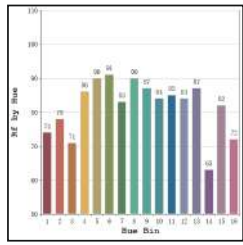
- Finish FS SS
- Cable Length C0.5 0.5 Meter  
C1 1 Meter  
CC Custom
- Voltage 24V DC24V
- IP Rating 68 IP68

Unit : MM

**Recessed Underwater Light**

**Illumination Options**

<span style="border: 1px solid black; padding: 1px;">30N</span> <span style="border: 1px solid black; padding: 1px;">30S</span> <span style="border: 1px solid black; padding: 1px;">30M</span> <span style="border: 1px solid black; padding: 1px;">30Asy</span>	9W/18W/27W	945lm/1890lm/2835lm 990lm/1980lm/2970lm	<span style="border: 1px solid black; padding: 1px;">CCT</span> <span style="border: 1px solid black; padding: 1px;">K</span> 3000K 4000K	15° 30° 45° Asy 15° 30° 45° Asy
<span style="border: 1px solid black; padding: 1px;">65N</span> <span style="border: 1px solid black; padding: 1px;">65S</span> <span style="border: 1px solid black; padding: 1px;">65M</span> <span style="border: 1px solid black; padding: 1px;">65Asy</span> <span style="border: 1px solid black; padding: 1px;">RGBN</span> <span style="border: 1px solid black; padding: 1px;">RGBS</span> <span style="border: 1px solid black; padding: 1px;">RGBM</span> <span style="border: 1px solid black; padding: 1px;">RGBAsy</span>	9W/18W/27W	1125lm/2250lm/3375lm 540lm/1080lm/1620lm	<span style="border: 1px solid black; padding: 1px;">CCT</span> <span style="border: 1px solid black; padding: 1px;">K</span> 6500K RGB	15° 30° 45° Asy 15° 30° 45° Asy



\* All degree & wattage options with photometric data available on request \*  
\* IP variants & list of accessories for this model available on request \*

**Technical Details**

Housing	SS 316 (316L available on request)	LOR	~85%
Mounting	Recessed mounted	CRI (Ra)	>80
Light Source	High Power LED	MacAdam Ellipse	<3
Weight	1020gms	Luminous Efficacy	~100lm/W
Junction Temperature	Tj>75°C (To be used only submerged underwater)	Life Time	L80-B10 50,000hrs.

**Accessories** **Other Products in this Series**

- Power Options**
- N Non Dimmable
  - P Phase Cut Dimming
  - A 0-10/ 1-10V Analog
  - D DALI Dimming

**Ingress protection 68 Connectors**

- IC 'I' Connector
- TC 'T' Connector
- XC 'X' Connector

Shuays Micro ERU542 Ø42 1W-3W	Shuays R-1 ERU543 Ø65 1W-3W	Shuays R-3 ERU544 Ø115 3W-9W	Shuays R-6 ERU545 Ø160 6W-18W	Shuays R-12 ERU547 Ø180 12W-36W	Shuays R-18 ERU548 Ø200 18W-54W	Shuays L-6 ERU554 L328xW63 6W-18W

Ordering code : ERUxxx(model no)-Fx(finish)-xx(cable length)-xxx(voltage)-xx(IP)-xxxxx(watt+cct+beam angle)-x(dimming)-xc(ip connectors)  
Example : {546} {FS} {C1} {24V} {68} {2730S} {A} {TC}