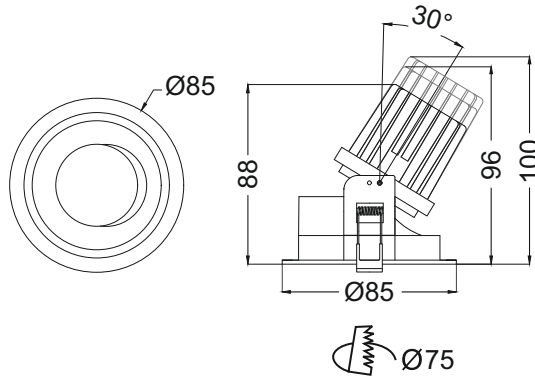




**Snap Accent  
IRD334**



**Finish Options**

- Trim TW White  
TB Black  
TC Custom
- Reflector RS Specular  
RG Satin Gold  
RP Pearl Black  
RM Matt  
RV Vivid Black
- IP Rating 20 IP20

Unit : MM

**Recessed Adjustable Downlight**

**Illumination Options**



5W/7W/10W



400lm/560lm/800lm



2700K



15° 24°  
38°



5W/7W/10W



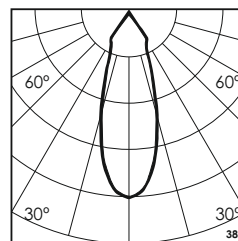
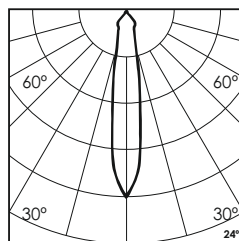
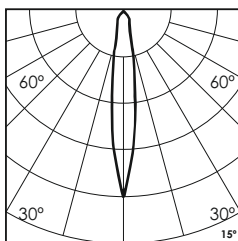
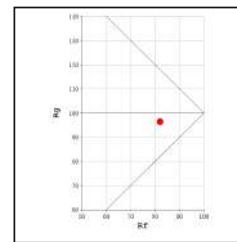
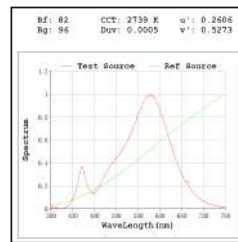
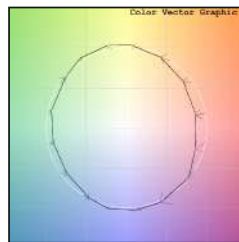
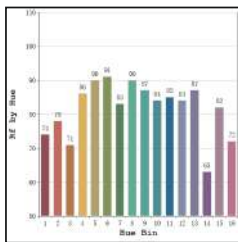
425lm/595lm/850lm



3000K



15° 24°  
38°



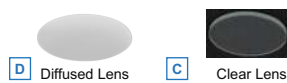
**Technical Details**

|                      |                          |                   |                    |
|----------------------|--------------------------|-------------------|--------------------|
| Housing              | Aluminum die casting     | LOR               | ~80%               |
| Mounting             | Spring - Ceiling mounted | UGR               | <19                |
| Light Source         | Single source COB LED    | CRI (Ra)          | >80                |
| Weight               | 150/175/185gms           | MacAdam Ellipse   | <3                 |
| Junction Temperature | Tj<75°C                  | Luminous Efficacy | ~75lm/W            |
| Heat Sink            | Al6063                   | Life Time         | L80-B10 50,000hrs. |

**Accessories**

**Power Options**

- N Non Dimmable  
P Phase Cut Dimming  
A 0-10/ 1-10V Analog  
D DALI Dimming



**Other Products in this Series**



\* All degree & wattage options with photometric data available on request \*  
 \* IP variants & list of accessories for this model available on request \*

Ordering code : IRDxxx(model no)-Tx(trim)-Rx(reflector)-xx(IP)-xxxx(watt+cct+beam angle)-x(dimming)-x(filter)  
 Example : {334} {TW} {RS} {20} {1027M} {A} {D}