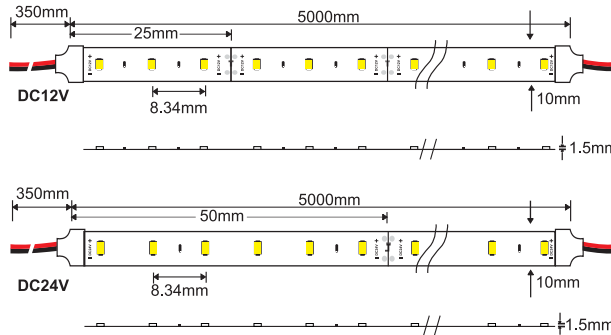




Svelte 24
LFS457

120 LED's per meter

2640lumens per meter@3000k



Dot free illumination

Voltage 12V DC12V
 24V DC24V

Sleeving SC Clear
 SO Opal

IP Rating 20 IP20
 65 IP65
 67 IP67
 68 IP68

Standard LED strip

Linear LED Strip Light

Custom made color temperature can be made available on request



24W/M



22 2340lm/m CCT 2200K
 24 2440lm/m CCT 2400K



40 2760lm/m CCT 4000K
 50 2880lm/m CCT 5000K



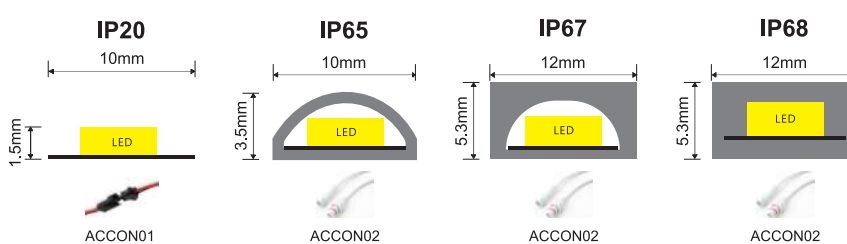
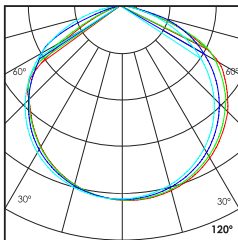
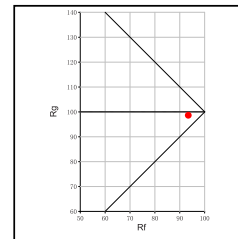
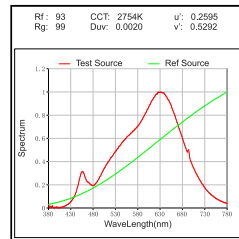
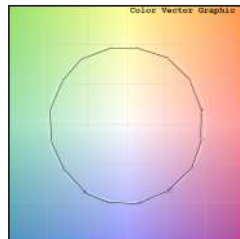
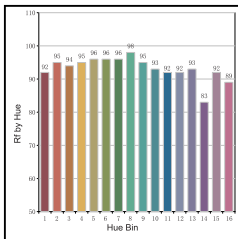
120°



27 2540lm/m CCT 2700K
 30 2640lm/m CCT 3000K



65 3100lm/m CCT 6500K
 70 3220lm/m CCT 7000K



Technical Details

LFS457 model cannot be used without any heat sink profile

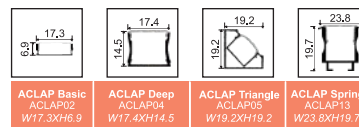
Type	Flexible circuit board	Number of LED's per meter	120 LED's
Mounting	Surface tape mounted	CRI	>90
Light Source	SMD LED	MacAdam Ellipse	<3
Minimum cut length	25mm/50mm	Luminous Efficacy	110lm/W@3000k
Junction Temperature	Tj<75 Degree	Lumens per meter	2640lm/M@3000k
Operating Voltage	12V/24V	Life Time	L80-B10 50,000hrs.

Accessories

Profile that can be used with above LED Strip

Power Options

- N Non Dimmable
- P Phase Cut Dimming
- A 0-10/ 1-10V Analog
- D DALI Dimming



Ordering code : LFSxxx(model no)-xxx(voltage)-Sx(sleeving)-xx(IP)-xxxx(watt per mtr+cct)-x(dimming)-ACCONxx(connector)-ACLAPxx(profile)
 Example : {457} {12V} {SC} {65} {2,427} {A} {02} {02}

[Sleeving not applicable for IP20 model]