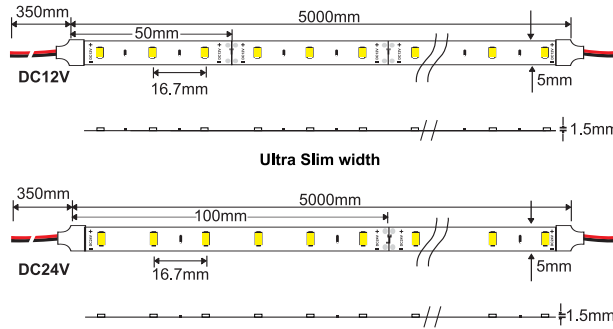




Svelte 4.8
LFS453
60 LED's per meter
240 lumens per meter@3000k



Voltage 12V DC12V
 24V DC24V

Sleeving SC Clear
 SO Opal

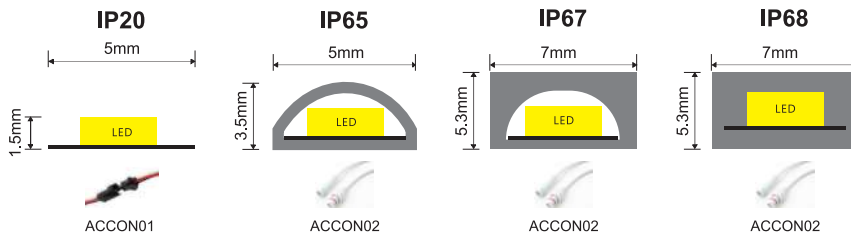
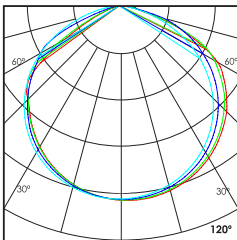
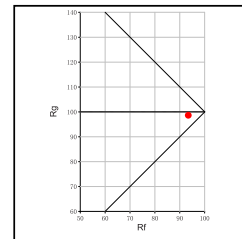
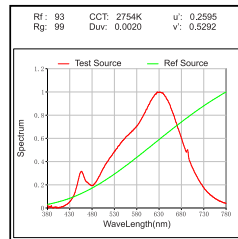
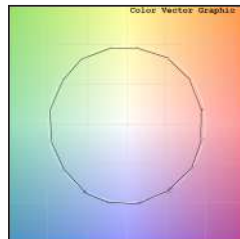
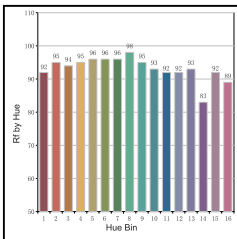
IP Rating 20 IP20
 65 IP65
 67 IP67
 68 IP68

Standard LED strip

Linear LED Strip Light

Custom made color temperature can be made available on request

4.8W/M	<input type="checkbox"/> 22 <input type="checkbox"/> 24	210lm/m 220lm/m	<input type="checkbox"/> CCT 2200K 2400K	<input type="checkbox"/> 40 <input type="checkbox"/> 50	250lm/m 260lm/m	<input type="checkbox"/> CCT 4000K 5000K
120°	<input type="checkbox"/> 27 <input type="checkbox"/> 30	230lm/m 240lm/m	<input type="checkbox"/> CCT 2700K 3000K	<input type="checkbox"/> 65 <input type="checkbox"/> 70	280lm/m 290lm/m	<input type="checkbox"/> CCT 6500K 7000K



Technical Details

LFS453 model can also be used without any heat sink profile

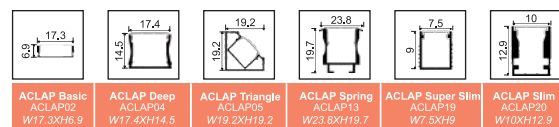
Type	Flexible circuit board	Number of LED's per meter	60 LED's
Mounting	Surface tape mounted	CRI	>90
Light Source	SMD LED	MacAdam Ellipse	<3
Minimum cut length	50mm/100mm	Luminous Efficacy	50lm/W@3000k
Junction Temperature	Tj<75 Degree	Lumens per meter	240lm/M@3000k
Operating Voltage	12V/24V	Life Time	L80-B10 50,000hrs.

Accessories

Profile that can be used with above LED Strip

Power Options

- N Non Dimmable
- P Phase Cut Dimming
- A 0-10/ 1-10V Analog
- D DALI Dimming



Ordering code : LFSxxx(model no)-xxx(voltage)-Sx(sleeving)-xx(IP)-xxxx(watt per mtr+cct)-x(dimming)-ACCONxx(connector)-ACLAPxx(profile)
Example : {453} {12V} {SC} {65} {2,427} {A} {02} {02}

[Sleeving not applicable for IP20 model]