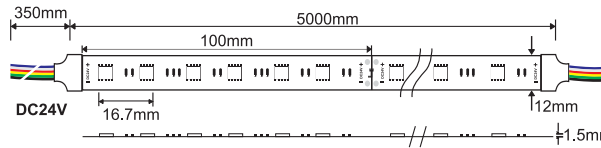




**Svelte+ 5-in-1
LFS488**

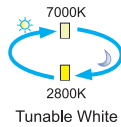


5-in-1 Single LED CW+RGB+WW

Voltage 24V DC24V

Sleeving SC Clear
SO Opal

IP Rating 20 IP20
65 IP65
67 IP67
68 IP68



Tunable White



RGB Color Control

Linear LED Strip Light



16.8W/M



720lm



RGB+3000K



820lm



RGB+6500K



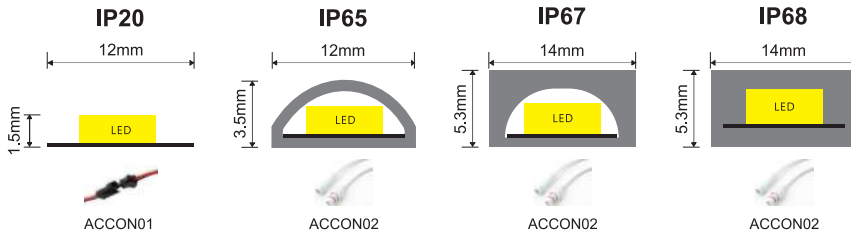
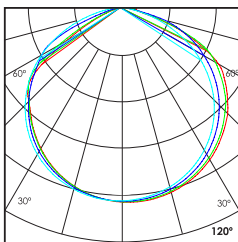
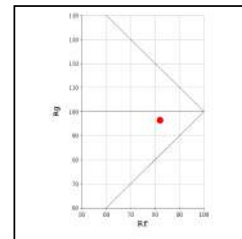
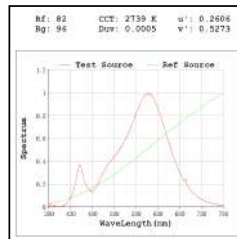
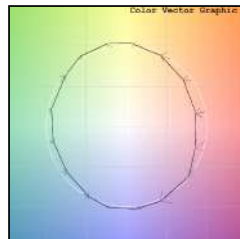
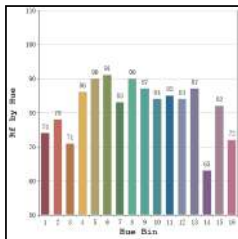
120°



760lm



RGB+4000K



Technical Details

LFS488 model cannot be used without any heat sink profile

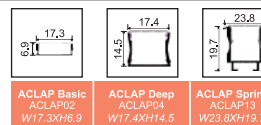
Type	Flexible circuit board	Number of LED's per meter	60 LED's
Mounting	Surface tape mounted	CRI	>80
Light Source	SMD LED	MacAdam Ellipse	<3
Minimum cut length	100mm	Luminous Efficacy	42.8lm/W@RGB30
Junction Temperature	Tj<75 Degree	Lumens per meter	720lm/M@RGB30
Operating Voltage	24V	Life Time	L80-B10 50,000hrs.

Accessories

Profile that can be used with above LED Strip

Control Options

- DM DMX Control
- DA DALI Control



Ordering code : LFSxxx(model no)-xxx(voltage)-Sx(sleeving)-xx(IP)-xxx(watt per mtr)-xx(dimming)-ACCONxx(connector)-ACLAPxx(profile)
 Example : {488} {24V} {SC} {65} {16.8} {DA} {02}

[Sleeving not applicable for IP20 model]