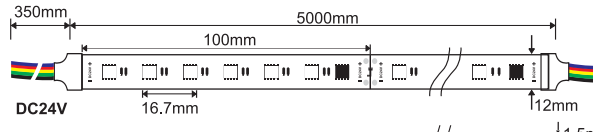


Svelte+ Digital
LFS491



Voltage 24V DC24V

Sleeving SC Clear
SO Opal

Every 6 LED pixels are programmable



Onboard Digital Control

IP Rating 20 IP20
65 IP65
67 IP67
68 IP68



RGB Color Control

Linear LED Strip Light



19.2W/M



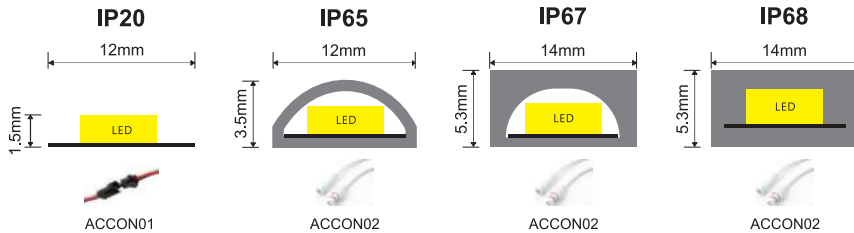
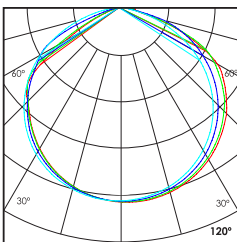
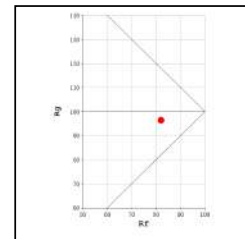
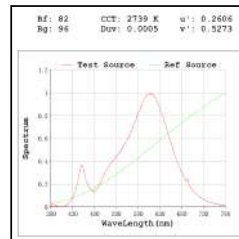
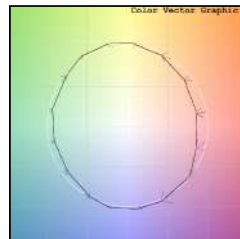
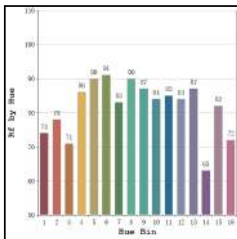
175lm



RGB



120°



Technical Details

****LFS491 model cannot be used without any heat sink profile****

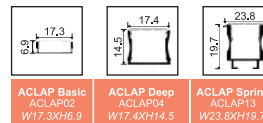
Type	Flexible circuit board	Number of LED's per meter	60 LED's
Mounting	Surface tape mounted	CRI	>80
Light Source	SMD LED	MacAdam Ellipse	<3
Minimum cut length	100mm	Luminous Efficacy	19.2lm/W@RGB
Junction Temperature	Tj<75 Degree	Lumens per meter	175lm/M@RGB
Operating Voltage	24V	Life Time	L80-B10 50,000hrs.

Accessories

Profile that can be used with above LED Strip

Control Options

- DM DMX Control
- DA DALI Control



Ordering code : LFSxxx(model no)-xxx(voltage)-Sx(sleeving)-xx(IP)-xxx(watt per mtr)-xx(dimming)-ACCONxx(connector)-ACLAPxx(profile)
 Example : {491} {24V} {SC} {65} {19.2} {DA} {02} {02}

[Sleeving not applicable for IP20 model]