

Voltage 24V DC24V

Sleeving SC Clear  
SO Opal

IP Rating 20 IP20  
65 IP65  
67 IP67  
68 IP68

Single RGB LED  
● Red LED  
● Green LED  
● Blue LED

RGB Color Control Single Color

**Linear LED Strip Light**

**\*\*Custom colors like Amber, Purple, etc. can be made available on request\*\***

14.4W/M

R 180lm  
G 425lm

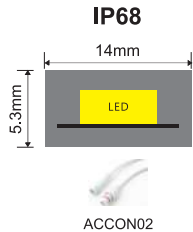
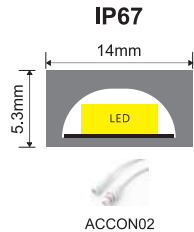
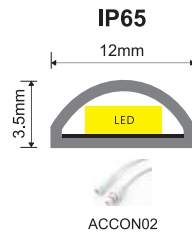
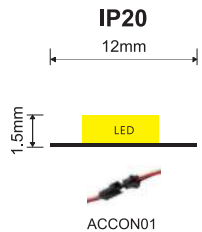
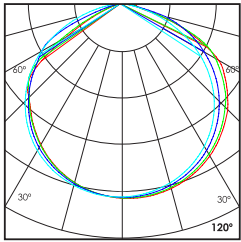
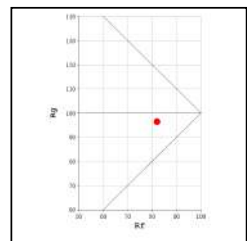
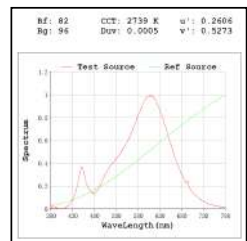
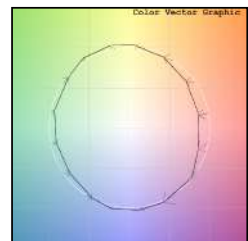
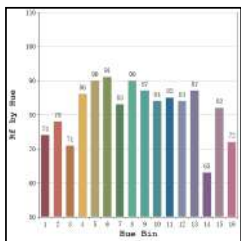
CCT Red 625nm  
K Green 520nm

C CCT Custom color  
K

120°

B 120lm  
RGB 360lm

CCT Blue 470nm  
K RGB (R:625 G:520 B:470)nm



**Technical Details**

**\*\*LFS482 model can also be used without any heat sink profile\*\***

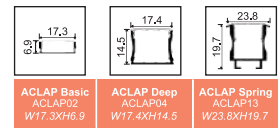
Type	Flexible circuit board	Number of LED's per meter	60 LED's
Mounting	Surface tape mounted	CRI	>80
Light Source	SMD LED	MacAdam Ellipse	<3
Minimum cut length	100mm	Luminous Efficacy	25lm/W@RGB
Junction Temperature	Tj<75 Degree	Lumens per meter	360lm/M@RGB
Operating Voltage	24V	Life Time	L80-B10 50,000hrs.

**Accessories**

**Profile that can be used with above LED Strip**

**Control Options**

- N Non Dimmable
- DM DMX Control
- DA DALI Control



Ordering code : LFSxxx(model no)-xxx(voltage)-Sx(sleeving)-xx(IP)-xxxxx(watt per mtr+cct)-xx(dimming)-ACCONxx(connector)-ACLAPxx(profile)  
 Example : {482} {24V} {SC} {65} {14.427} {DA} {02} {02}

[Sleeving not applicable for IP20 model]