

Voltage 24V DC24V

Sleeving SC Clear  
SO Opal

RGB + WW/W LED's (Pick one color temp. for this LED)

Single RGB LED + WW / NW / CW

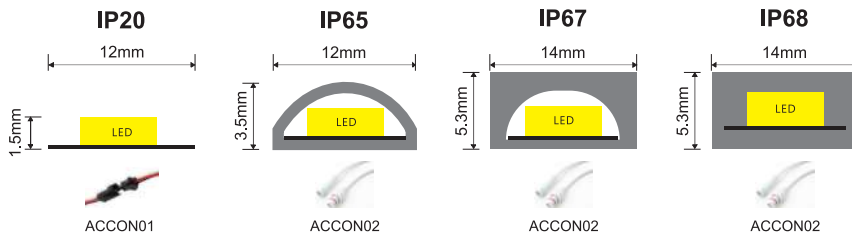
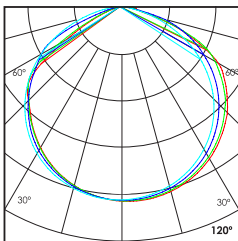
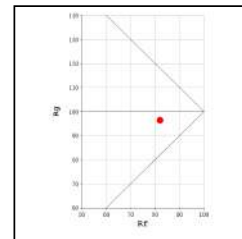
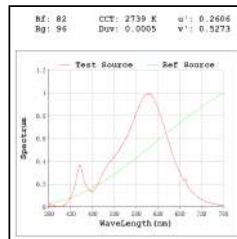
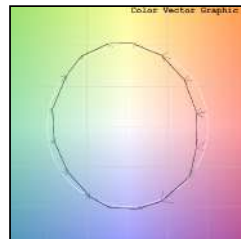
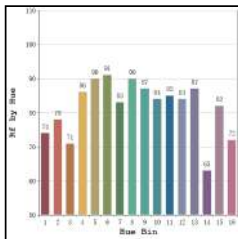
IP Rating 20 IP20  
65 IP65  
67 IP67  
68 IP68

RGB Color Control

### Linear LED Strip Light

23W/M RGB 24 RGB 27 1200lm cct RGB+2400K RGB 50 RGB 65 1325lm cct RGB+5000K K RGB+2700K K RGB+6500K

120° RGB 30 RGB 40 1250lm cct RGB+3000K RGB C K RGB+4000K K RGB+Custom color



### Technical Details

\*\*LFS486 model cannot be used without any heat sink profile\*\*

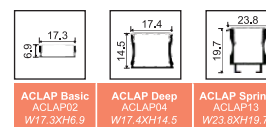
Type	Flexible circuit board	Number of LED's per meter	96 LED's
Mounting	Surface tape mounted	CRI	>80
Light Source	SMD LED	MacAdam Ellipse	<3
Minimum cut length	62.5mm	Luminous Efficacy	53lm/W@RGB27
Junction Temperature	Tj<75 Degree	Lumens per meter	1220lm/M@RGB27
Operating Voltage	24V	Life Time	L80-B10 50,000hrs.

### Accessories

#### Control Options

N Non Dimmable  
DM DMX Control  
DA DALI Control

#### Profile that can be used with above LED Strip



Ordering code : LFSxxx(model no)-xxx(voltage)-Sx(sleeving)-xx(IP)-xxxxxxx(watt per mtr+cct)-xx(dimming)-ACCONxx(connector)-ACLAPxx(profile)  
Example : {486} {24V} {SC} {65} {23RGB27} {DA} {02}

[Sleeving not applicable for IP20 model]