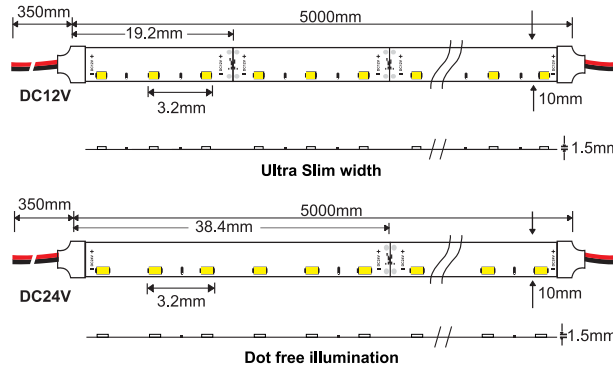




Svelte Side LFS460

156 LED's per meter

1560 lumens per meter@3000k



Voltage 12V DC12V
 24V DC24V

Sleeving SC Clear
 SO Opal

IP Rating 20 IP20
 65 IP65

Side emitting LED

Linear LED Strip Light

Custom made color temperature can be made available on request



15.6W/M



22 1380lm/m CCT 2200K
24 1450lm/m CCT 2400K



40 1630lm/m CCT 4000K
50 1690lm/m CCT 5000K



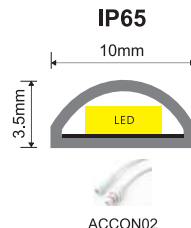
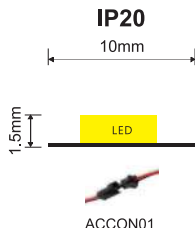
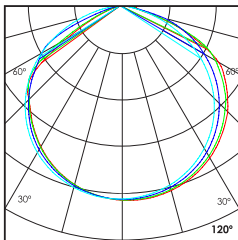
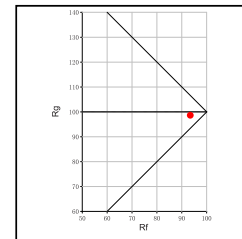
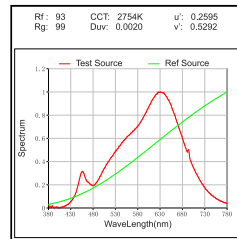
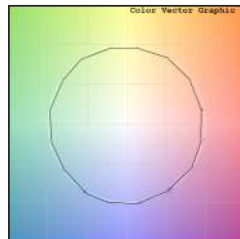
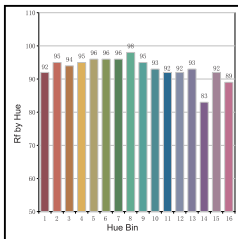
120°



27 1500lm/m CCT 2700K
30 1560lm/m CCT 3000K



65 1820lm/m CCT 6500K
70 1900lm/m CCT 7000K



Technical Details

LFS460 model can also be used without any heat sink profile

Type	Flexible circuit board	Number of LED's per meter	156 LED's
Mounting	Surface tape mounted	CRI	>90
Light Source	SMD LED	MacAdam Ellipse	<3
Minimum cut length	19.2mm/38.4mm	Luminous Efficacy	100lm/W@3000k
Junction Temperature	Tj<75 Degree	Lumens per meter	1560lm/M@3000k
Operating Voltage	12V/24V	Life Time	L80-B10 50,000hrs.

Accessories

Power Options

- N Non Dimmable
- P Phase Cut Dimming
- A 0-10/ 1-10V Analog
- D DALI Dimming

Ordering code : LFSxxx(model no)-xxx(voltage)-Sx(sleeving)-xx(IP)-xxxx(watt per mtr+cct)-x(dimming)-ACCONxx(connector)
 Example : {460} {12V} {SC} {65} {2,427} {A} {02}
 [Sleeving not applicable for IP20 model]