



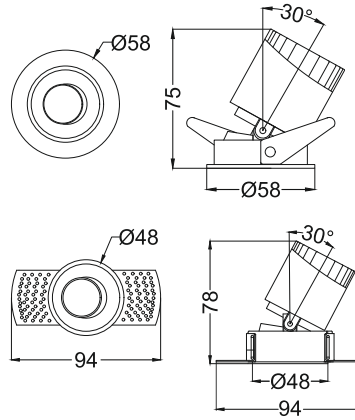
**Tenace SA
IRD594**

Trim

Ø50

Trimless

Ø50



Finish Options

- Mounting MT Trim MT Trimless
- Reflector RW White RV Vivid Black RM Matt RS Specular RS Satin Gold RP Pearl Black
- IP Rating 20 IP20 44 IP44

Unit : MM

Recessed Adjustable Downlight

Illumination Options

27N 27S
27M



5W



450lm

cct 2700K



10° 24°
38°

30N 30S
30M



5W

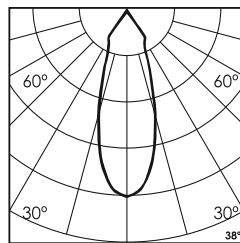
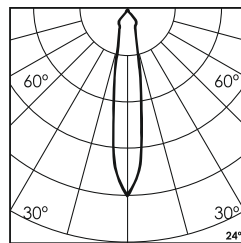
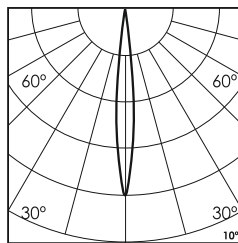
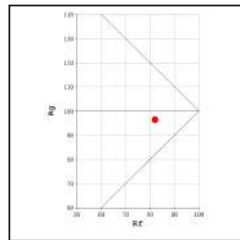
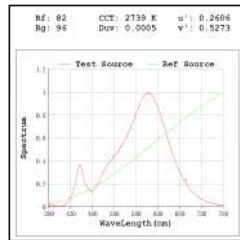
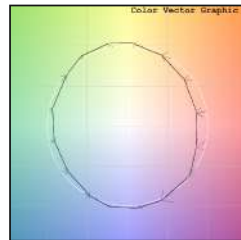
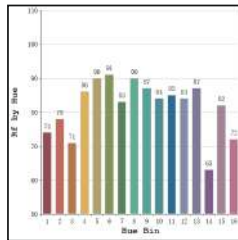


465lm

cct 3000K



10° 24°
38°



* All degree & wattage options with photometric data available on request *
* IP variants & list of accessories for this model available on request *

Technical Details

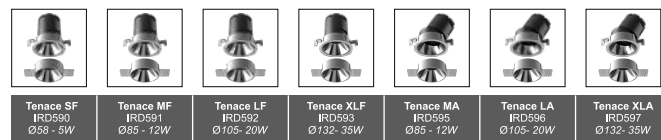
Housing	Aluminum die casting	LOR	~80%
Mounting	Spring / Trimless - Ceiling mounted	UGR	<19
Light Source	Single source LED	CRI (Ra)	>80
Weight	240gms	MacAdam Ellipse	<3
Junction Temperature	Tj<75°C	Luminous Efficacy	~75lm/W
Heat Sink	Al6063	Life Time	L80-B10 50,000hrs.

Accessories

- Power Options
- N Non Dimmable
 - P Phase Cut Dimming
 - A 0-10/ 1-10V Analog
 - D DALI Dimming

- H Honeycomb
- S Softening Lens
- D Diffused Lens
- C Clear Lens

Other Products in this Series



Ordering code : IRDxxx(model no)-Mx(mounting)-Rx(reflector)-xx(IP)-xxxx(watt+cct+beam angle)-x(dimming)-x(refler)
Example : (594) (MT) (RW) (20) (527S) (A) (S)