

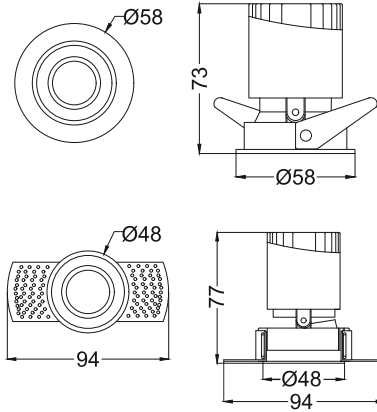


**Tenace SF
IRD590**

Trim



Trimless



Finish Options

- Mounting**
- MT Trim
 - MT Trimless
- Reflector**
- RW White
 - RV Vivid Black
 - RM Matt
 - RS Specular
 - RP Satin Gold
 - RP Pearl Black
- IP Rating**
- 20 IP20
 - 44 IP44

Unit : MM

Recessed Fixed Downlight

Illumination Options



5W



450lm



2700K



10° 24°
38°



5W



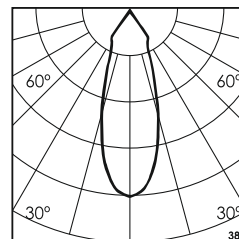
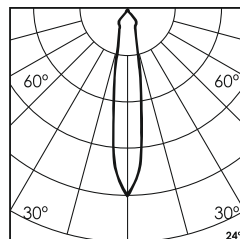
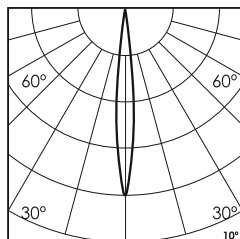
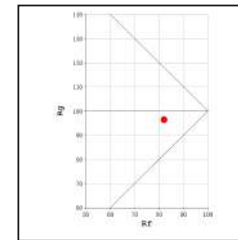
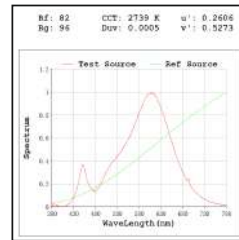
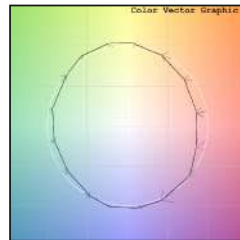
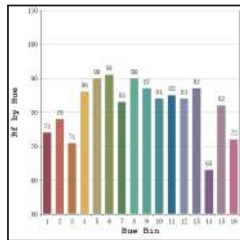
465lm



3000K



10° 24°
38°



* All degree & wattage options with photometric data available on request *
 * IP variants & list of accessories for this model available on request *

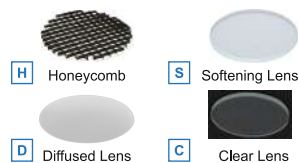
Technical Details

Housing	Aluminum die casting	LOR	~80%
Mounting	Spring / Trimless - Ceiling mounted	UGR	<19
Light Source	Single source LED	CRI (Ra)	>80
Weight	240gms	MacAdam Ellipse	<3
Junction Temperature	Tj<75°C	Luminous Efficacy	~75lm/W
Heat Sink	Al6063	Life Time	L80-B10 50,000hrs.

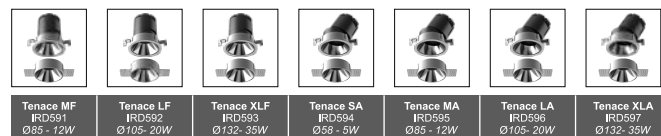
Accessories

Power Options

- N Non Dimmable
- P Phase Cut Dimming
- A 0-10/ 1-10V Analog
- D DALI Dimming



Other Products in this Series



Ordering code : IRDxxx(model no)-Mx(mounting)-Rx(reflector)-xx(IP)-xxxx(watt+cct+beam angle)-x(dimming)-x(refler)
 Example : (590) (MT) (RW) (20) (527S) (A) (S)