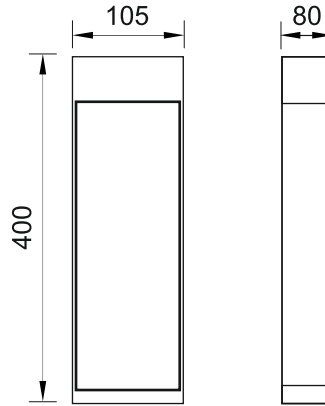




**Tomoko Curve**  
EBL724



**Finish Options**

- Housing  HG Grey  
 HB Black  
 HC Custom

- IP Rating  65 IP65

Unit : MM

**Bollard Light**

**Illumination Options**

27	400
27	600



740lm



2700K

**Bollard height**



400mm



600mm

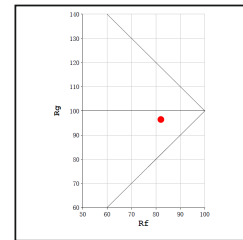
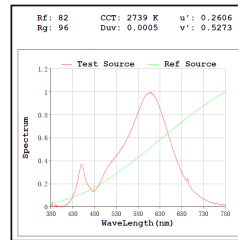
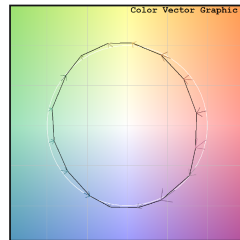
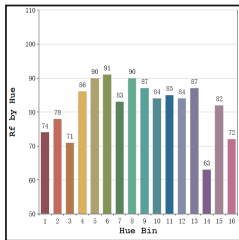
30	400
30	600



800lm



3000K



\* All degree & wattage options with photometric data available on request \*  
 \* IP variants & list of accessories for this model available on request \*

**Technical Details**

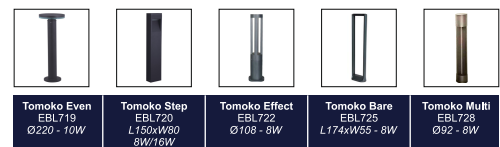
Housing	Aluminum die casting	LOR	~80%
Mounting	Bollard mounted	UGR	<19
Light Source	COB	CRI (Ra)	>80
Pole height	400mm/600mm	MacAdam Ellipse	<3
Junction Temperature	Tj<75°C	Luminous Efficacy	~75lm/W
Heat Sink	Al6063	Life Time	L80-B10 50,000hrs.

**Accessories**

**Power Options**

- N Non Dimmable  
 P Phase Cut Dimming  
 A 0-10/ 1-10V Analog  
 D DALI Dimming

**Other Products in this Series**



Ordering code : EBLxxx(model no)-Hx(housing)-xx(IP)-xxxxxx(watt+cct+bollard height)-x(dimming)  
 Example : {724} {HG} {65} {827600} {A}