

Finish Options

Housing HW White
 HB Black
 HC Custom

IP Rating 20 IP20

Topics S1
ISD804

Unit : MM

Surface Fixed Downlight

Illumination Options



15W



915lm



2700K



100°



15W



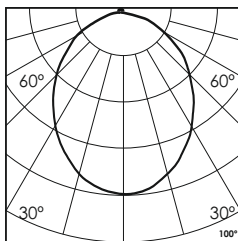
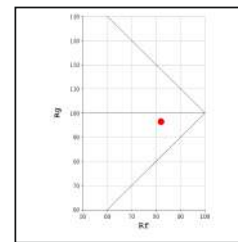
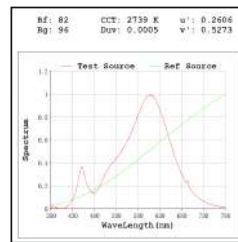
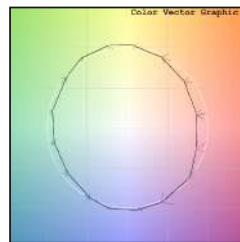
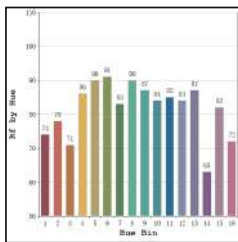
945lm



3000K



100°



* All degree & wattage options with photometric data available on request *
 * IP variants & list of accessories for this model available on request *

Technical Details

Housing	Aluminum die casting	LOR	~80%
Mounting	Spring - Ceiling mounted	UGR	<19
Light Source	SMD	CRI (Ra)	>80
Weight	215gms	MacAdam Ellipse	<3
Junction Temperature	Tj<75°C	Luminous Efficacy	~75lm/W
Heat Sink	Al6063	Life Time	L80-B10 50,000hrs.

Accessories

Power Options

- N Non Dimmable
- P Phase Cut Dimming
- A 0-10/ 1-10V Analog
- D DALI Dimming

Other Products in this Series



Ordering code : ISDxxx(model no)-Hx(Housing)-xx(IP)-xxxxx(watt+cct+beam angle)-x(dimming)
 Example : (804) (HW) (20) (1527W) (A)