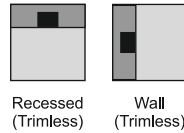
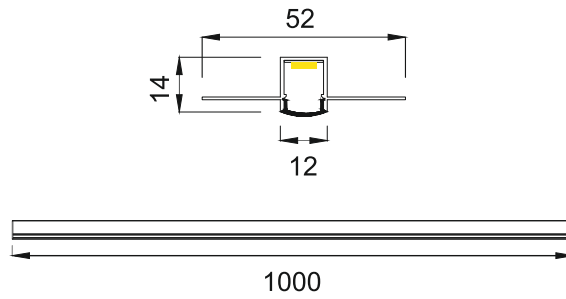


**Trax Two Gyp2
LPL513**



Finish Options

- Housing Finish
- HA Al. Anodised
 - HW White
 - HB Black
 - HC Custom

- Length
- L10 1000 MM
 - L20 2000 MM
 - LC Custom

- IP Rating 20 IP20

Unit : MM

Linear LED Light - To be used with Svelte Series flexible strip

LFS455/456/457
6W/12W/24W/M
 6W 12W 24W

27 465/930/1860lm/m

2700K

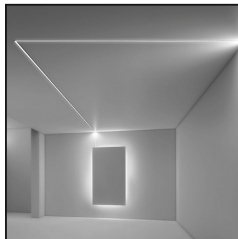
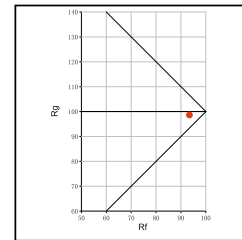
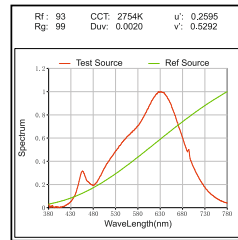
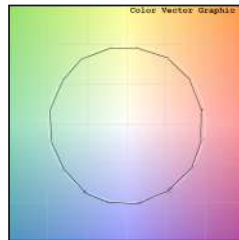
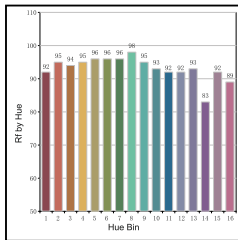
40 525/1050/2100lm/m 4000K

Diffused

30 495/990/1980lm/m

3000K

65 615/1230/2460lm/m 6500K



Technical Details

| | | | |
|----------------------|-------------------|---------------------------|-------------------------|
| Housing material | Aluminum Extruded | Number of LED's per meter | 30/60/120LED's |
| Diffuser material | PMMA | CRI | >90 |
| Mounting | Recessed mounted | MacAdam Ellipse | <3 |
| Weight | 215gms per 1000mm | Luminous Efficacy | 110lm/W@3000k |
| Junction Temperature | Tj<75 Degree | Lumens per meter | 660/1320/2640lm/M@3000k |
| | | Life Time | L80-B10 50,000hrs. |

Accessories

- Power Options**
- N Non Dimmable
 - P Phase Cut Dimming
 - A 0-10/ 1-10V Analog
 - D DALI Dimming

Other Products in this Series

Ordering code : LPLxxx(model no)-Hx(housing)-Lxx(length)-xx(IP)-xxxx(watt per meter+cct)-x(dimming)
 Example : {513} {HA} {L20} {20} {1227} {A}