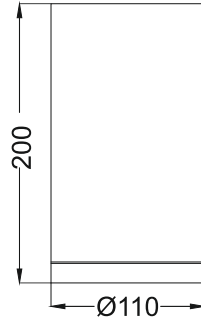
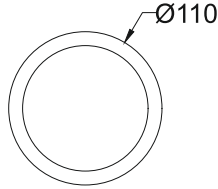




Vibrance R3
ESD674A



Ceiling



Finish Options

- Housing HG Grey
 HB Black
 HC Custom

- IP Rating 65 IP65

Unit : MM

Surface Fixed Downlight

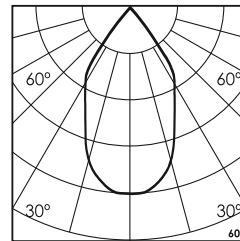
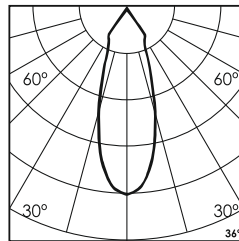
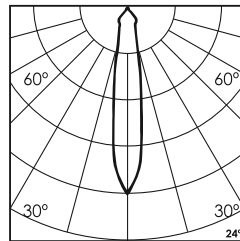
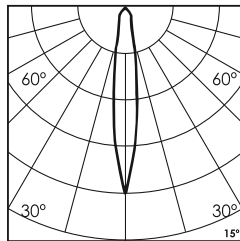
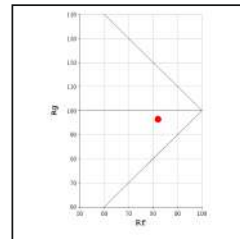
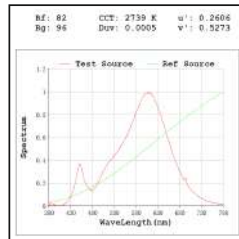
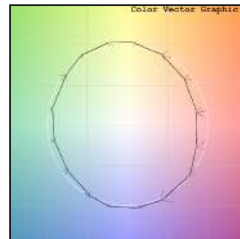
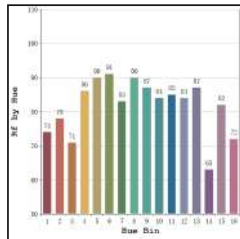
Illumination Options

- 27W 27S W 20W
 30W 30S W 20W
 30W 30S W 20W

- 1m 1640lm
 1m 1700lm
 1m 1840lm

- CCT 2700K
 CCT 3000K
 CCT 4000K

- 15° 24°
 36° 60°
 15° 24°
 36° 60°
 15° 24°
 36° 60°



Technical Details

Housing	Aluminum die casting	LOR	~80%
Mounting	Surface - Ceiling / Wall mounted	UGR	<19
Light Source	Single source LED COB	CRI (Ra)	>80
Weight	490gms	MacAdam Ellipse	<3
Junction Temperature	Tj<75°C	Luminous Efficacy	~75lm/W
Heat Sink	Al6063	Life Time	L80-B10 50,000hrs.

Accessories

- Power Options
 N Non Dimmable
 P Phase Cut Dimming
 A 0-10/ 1-10V Analog
 D DALI Dimming

- H Honeycomb
 S Softening Lens
 D Diffused Lens
 C Clear Lens

Other Products in this Series



* All degree & wattage options with photometric data available on request *
 * IP variants & list of accessories for this model available on request *

Ordering code : ESDxxxx(model no)-Hx(housing)-xx(IP)-xxxx(watt+cct+beam angle)-x(dimming)-x(filter)
 Example : {674A} {HG} {65} {2027S} {A} {S}