

Finish Options

Housing  HG Grey  
 HB Black  
 HC Custom

IP Rating  65 IP65

**Vibrance R4**  
ESD675A



Ceiling



NA

Unit : MM

Surface Fixed Downlight

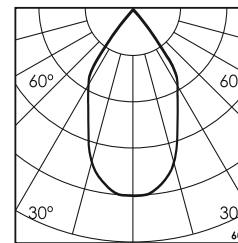
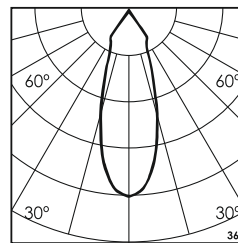
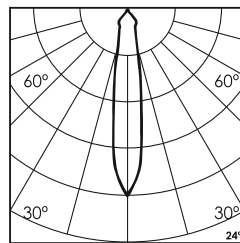
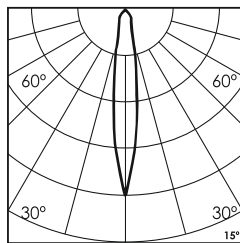
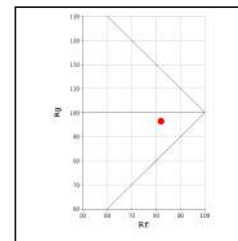
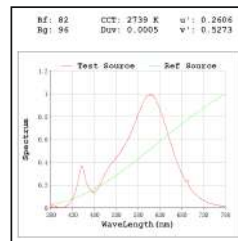
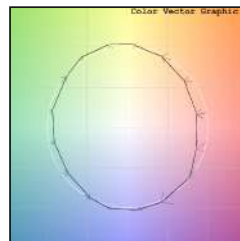
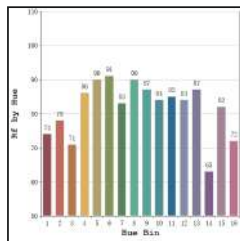
Illumination Options

<input type="checkbox"/> 27W	<input type="checkbox"/> 27S		30W
<input type="checkbox"/> 30W	<input type="checkbox"/> 30S		30W
<input type="checkbox"/> 30W	<input type="checkbox"/> 30W		30W

	2460lm
	2550lm
	2760lm

	2700K
	3000K
	4000K

	15°	24°
	36°	60°
	15°	24°
	36°	60°
	15°	24°
	36°	60°



Technical Details

Housing	Aluminum die casting	LOR	~80%
Mounting	Surface - Ceiling / Wall mounted	UGR	<19
Light Source	Single source LED COB	CRI (Ra)	>80
Weight	895gms	MacAdam Ellipse	<3
Junction Temperature	Tj<75°C	Luminous Efficacy	~75lm/W
Heat Sink	Al6063	Life Time	L80-B10 50,000hrs.

Accessories

Power Options

<input type="checkbox"/> N	Non Dimmable
<input type="checkbox"/> P	Phase Cut Dimming
<input type="checkbox"/> A	0-10/ 1-10V Analog
<input type="checkbox"/> D	DALI Dimming

<input type="checkbox"/> H	Honeycomb	<input type="checkbox"/> S	Softening Lens
<input type="checkbox"/> D	Diffused Lens	<input type="checkbox"/> C	Clear Lens

Other Products in this Series

Vibrance R1 ESD672A Ø65 - 5W	Vibrance R2 ESD673A Ø90 - 10W	Vibrance R3 ESD674A Ø110 - 20W	Vibrance S1 ESD676A Ø65 - 5W	Vibrance S2 ESD677A Ø90 - 10W	Vibrance S3 ESD678A Ø120 - 20W	Vibrance S4 ESD679A Ø150 - 30W

\* All degree & wattage options with photometric data available on request \*  
\* IP variants & list of accessories for this model available on request \*

Ordering code : ESDxxxx(model no)-Hx(housing)-xx(IP)-xxxx(watt+cct+beam angle)-x(dimming)-x(filter)  
Example : {675A} {HG} {65} {3027S} {A} {S}