

Finish Options

Housing  HG Grey  
 HB Black  
 HC Custom

IP Rating  65 IP65

**Vibrance S1**  
ESD676A



Ceiling



NA

Unit : MM

Surface Fixed Downlight

Illumination Options

27W	27S
30W	30S
30W	30W
30W	30S
30W	30W



5W



410lm



2700K



15° 24°  
36° 60°



5W



425lm



3000K



15° 24°  
36° 60°



5W



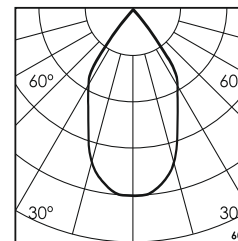
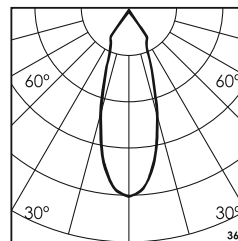
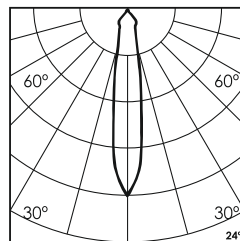
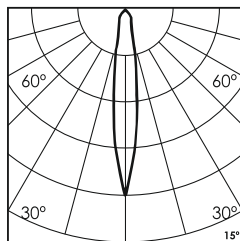
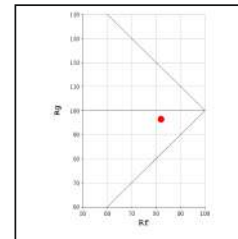
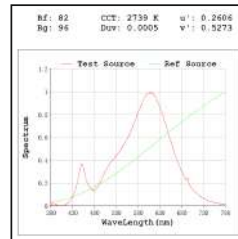
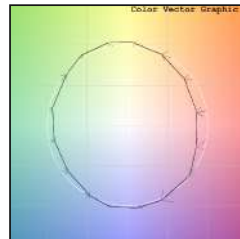
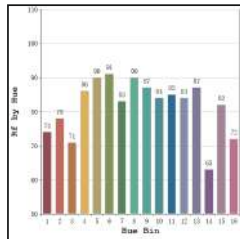
460lm



4000K



15° 24°  
36° 60°



\* All degree & wattage options with photometric data available on request \*  
\* IP variants & list of accessories for this model available on request \*

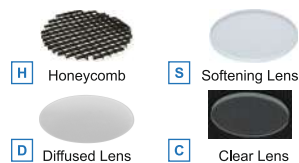
Technical Details

Housing	Aluminum die casting	LOR	~80%
Mounting	Surface - Ceiling / Wall mounted	UGR	<19
Light Source	Single source LED COB	CRI (Ra)	>80
Weight	210gms	MacAdam Ellipse	<3
Junction Temperature	Tj<75°C	Luminous Efficacy	~75lm/W
Heat Sink	Al6063	Life Time	L80-B10 50,000hrs.

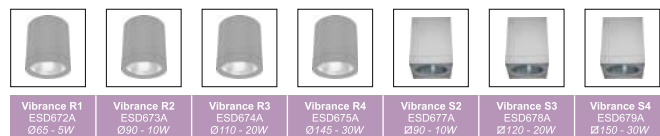
Accessories

Power Options

<input type="checkbox"/> N	Non Dimmable
<input type="checkbox"/> P	Phase Cut Dimming
<input type="checkbox"/> A	0-10/ 1-10V Analog
<input type="checkbox"/> D	DALI Dimming



Other Products in this Series



Ordering code : ESDxxx(model no)-Hx(housing)-xx(IP)-xxx(watt+cct+beam angle)-x(dimming)-x(filter)  
Example : {676A} {HG} {65} {527S} {A} {S}