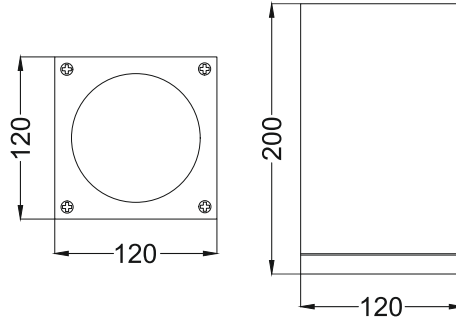




Vibrance S3
ESD678A



Ceiling



Finish Options

Housing HG Grey
 HB Black
 HC Custom

IP Rating 65 IP65

Unit : MM

Surface Fixed Downlight

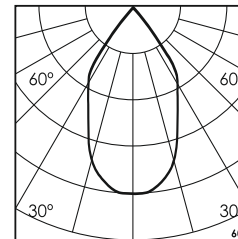
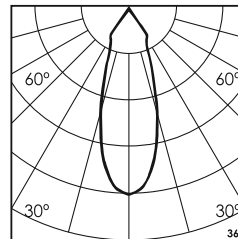
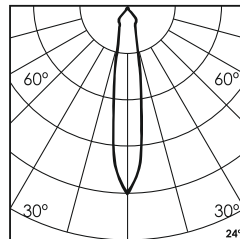
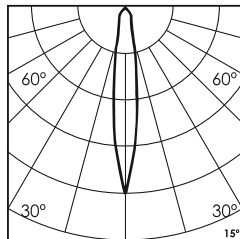
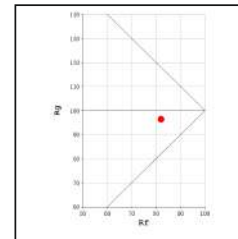
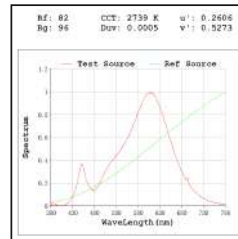
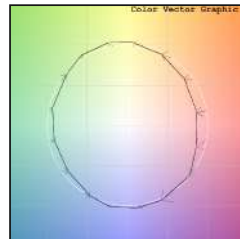
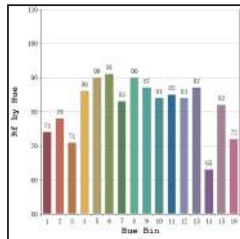
Illumination Options

<input type="checkbox"/> 27W	<input type="checkbox"/> 27S		20W
<input type="checkbox"/> 30W	<input type="checkbox"/> 30S		20W
<input type="checkbox"/> 30W	<input type="checkbox"/> 30W		20W

	1640lm
	1700lm
	1840lm

	2700K
	3000K
	4000K

	15°	24°
	36°	60°
	15°	24°
	36°	60°
	15°	24°
	36°	60°



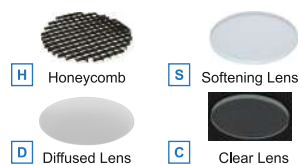
Technical Details

Housing	Aluminum die casting	LOR	~80%
Mounting	Surface - Ceiling / Wall mounted	UGR	<19
Light Source	Single source LED COB	CRI (Ra)	>80
Weight	495gms	MacAdam Ellipse	<3
Junction Temperature	Tj<75°C	Luminous Efficacy	~75lm/W
Heat Sink	Al6063	Life Time	L80-B10 50,000hrs.

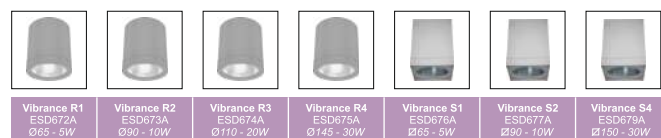
Accessories

Power Options

<input type="checkbox"/> N	Non Dimmable
<input type="checkbox"/> P	Phase Cut Dimming
<input type="checkbox"/> A	0-10/ 1-10V Analog
<input type="checkbox"/> D	DALI Dimming



Other Products in this Series



* All degree & wattage options with photometric data available on request *
* IP variants & list of accessories for this model available on request *

Ordering code : ESDxxxx(model no)-Hx(housing)-xx(IP)-xxxx(watt+cct+beam angle)-x(dimming)-x(filter)
Example : {678A} {HG} {65} {2027S} {A} {S}