

Ceiling



NA

Finish Options

Housing HG Grey
 HB Black
 HC Custom

IP Rating 65 IP65

Vibrance S4
ESD679A

Unit : MM

Surface Fixed Downlight

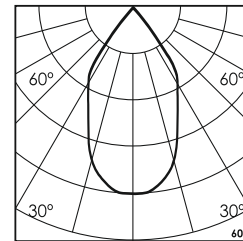
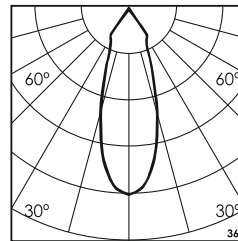
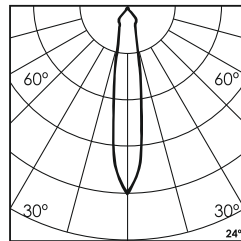
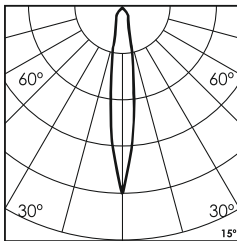
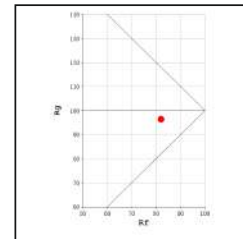
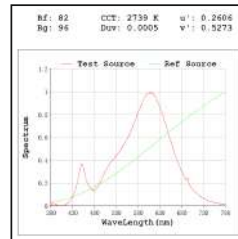
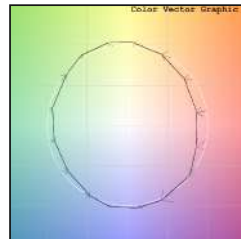
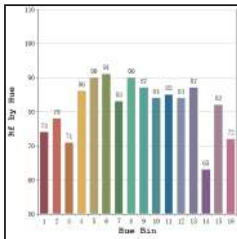
Illumination Options

<input type="checkbox"/> 27W	<input type="checkbox"/> 27S		30W
<input type="checkbox"/> 30N	<input type="checkbox"/> 30S		30W
<input type="checkbox"/> 30M	<input type="checkbox"/> 30W		30W
<input type="checkbox"/> 30N	<input type="checkbox"/> 30S		30W
<input type="checkbox"/> 30M	<input type="checkbox"/> 30W		30W

	2460lm
	2550lm
	2760lm

	2700K
	3000K
	4000K

	15°	24°
	36°	60°
	15°	24°
	36°	60°
	15°	24°
	36°	60°



* All degree & wattage options with photometric data available on request *
* IP variants & list of accessories for this model available on request *

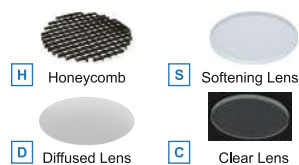
Technical Details

Housing	Aluminum die casting	LOR	~80%
Mounting	Surface - Ceiling / Wall mounted	UGR	<19
Light Source	Single source LED COB	CRI (Ra)	>80
Weight	900gms	MacAdam Ellipse	<3
Junction Temperature	Tj<75°C	Luminous Efficacy	~75lm/W
Heat Sink	Al6063	Life Time	L80-B10 50,000hrs.

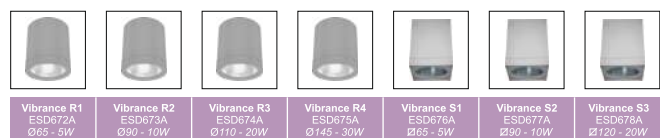
Accessories

Power Options

<input type="checkbox"/> N	Non Dimmable
<input type="checkbox"/> P	Phase Cut Dimming
<input type="checkbox"/> A	0-10/ 1-10V Analog
<input type="checkbox"/> D	DALI Dimming



Other Products in this Series



Ordering code : ESDxxxx(model no)-Hx(housing)-xx(IP)-xxxx(watt+cct+beam angle)-x(dimming)-x(filter)
Example : {679A} {HG} {65} {3027S} {A} {S}