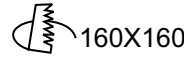


Finish Options

- Trim TW White
 TB Black
 TC Custom

- IP Rating 44 IP44



Zenith S3
IRD800

Unit : MM

Recessed Fixed Downlight

Illumination Options



20W



1200lm



2700K



100°



20W



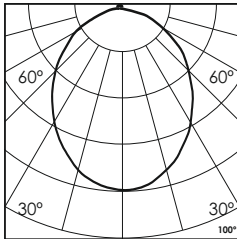
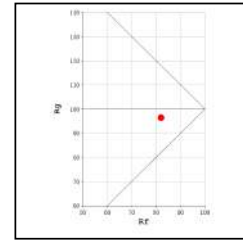
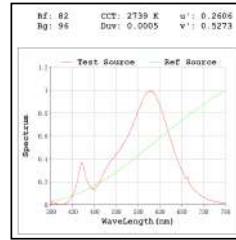
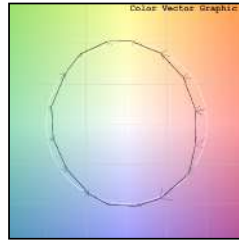
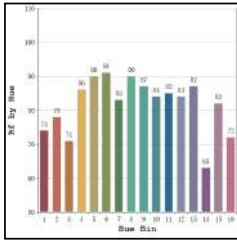
1300lm



3000K



100°



* All degree & wattage options with photometric data available on request *
 * IP variants & list of accessories for this model available on request *

Technical Details

Housing	Aluminum die casting	LOR	~80%
Mounting	Spring - Ceiling mounted	UGR	<19
Light Source	SMD	CRI (Ra)	>80
Weight	615gms	MacAdam Ellipse	<3
Junction Temperature	Tj<75°C	Luminous Efficacy	~75lm/W
Heat Sink	Al6063	Life Time	L80-B10 50,000hrs.

Accessories

Power Options

- N Non Dimmable
 P Phase Cut Dimming
 A 0-10/ 1-10V Analog
 D DALI Dimming

Other Products in this Series



Ordering code : IRDxxx(model no)-Tx(trim)-xx(IP)-xxxxx(watt+cct+beam angle)-x(dimming)
 Example : {800} {TW} {44} {2027W} {A}